

SCHOOL OF ARCHITECTURE · CUHK · 2022 - 2023





建中

Message from the Director

Welcome to the new academic year 2022-23. While Hong Kong remains affected by the pandemic, our School aims to move ahead and we commit to delivering a timely, relevant, and engaging programme. With our learning activities in the new year, we will:

1. Address the challenges created by the recent health and climate crises.
2. Reconnect to our nearby communities, and
3. Re-engage with the world beyond Hong Kong.

In the last few years, we have become used to online communication. While this allowed us to safely continue our education throughout the pandemic, it restricted our use of workshop and studio spaces and cut off opportunities for personal interactions. Thus, for the coming year, we hope to resume face-to-face teaching and provide as many opportunities as possible to reconnect and make use of our rich facilities in School and on campus.

The School has a long tradition of social commitment. Following this, we will engage with local communities in co-creation studios and design-built projects. Other studios set their goal to develop entire zero-carbon communities. And, as a new joint School initiative, we embark on new shores with our CUHK Africa Lab studios, expanding our global engagement and learning from new cultural encounters, issues and sites.

While facing many severe challenges, studying architecture and urban design is empowering. It provides us tools to negotiate between contradictions and work out far-reaching and practical solutions for a better world.

On behalf of the School, I thank all my colleagues for their extraordinary commitment to developing this programme. I wish all returning and new students an engaging, thought-provoking, and meaningful year.

Hendrik Tieben
Director and Professor
School of Architecture



EXIT

30

1991

2021

Contents

Message from the Director	3
Programme Overview	6
Curriculum	8
Calendar	10
BSc (AS)	
Overview	12
Studio Experience	14
Studio Explore	16
Studio Analyse	18
Studio Build	20
Studio Community	22
Studio Develop	24
MArch	
Overview	26
MArch Design Studios	28
Required Courses	40
Elective Courses	42
MSc (Urban Design)	44
MPhil-PhD	48
Faculty	52
Events	54
Summer Activities	56
30th Anniversary Celebration	60
Student Exchange	62
Awards and Scholarships	64
Location	68

Programme Overview

Professional Programmes

BSSc (AS) **Architectural Studies**

The Bachelor of Social Science (Architectural Studies) – BSSc (AS) – is the first part of a two-degree sequence in professional architectural education. This sequence is designed to provide a basis for education in general and preparation for professional work as an architect in particular. Students are encouraged to enrich their core studies in architecture by exploring lateral relationships with other subjects and disciplines as well as through independent studies and experiences of other cultures. The core studies consist of design studios in addition to humanities, technology and professional courses.

MArch **Architecture**

The Master of Architecture programme – MArch – is the second part of a two-degree sequence in professional architectural education. It is a taught postgraduate programme for students who intend to become architects upon their graduation. The programme offers a series of research-based advanced studios and independent design explorations which both articulate an intellectual position and demonstrate the impact of that position in design. Applicants should have a pre-professional architecture degree (equivalent to HKIA or CAA accreditation), such as the BSSc (AS) from CUHK, and relevant work experience.

Joint Programme

BSSc (US) **Urban Studies**

The Bachelor of Social Science (Urban Studies) – BSSc (US) – is designed for students to explore the complexities and challenges of the rapidly evolving urban world, global urbanisation processes and various strands of urbanism. It is jointly organised by the Department of Geography and Resource Management and the School of Architecture, with input from various departments in the Faculties of Social Science and Arts. Besides the learning of theories of urban development, the rigorous application of skills and techniques for urban analysis, and the contextual understanding of sustainable practices, students are required to develop expertise in concentration areas such as urban planning and design, urban environment, urban policy and governance.

Postgraduate Programmes

MSc Urban Design

Over the past decades, Hong Kong and the Pearl River Delta have been a laboratory for urbanism. Rapid urban growth, mass migration and new policies have led to new urban forms, but environmental deterioration and social imbalance have also increased. Urban design can play an important role to create more liveable and sustainable cities if it is able to integrate knowledge about ecological, economic and social issues and is based on a clear set of values. The MSc programme in Urban Design is based on a fundamental understanding of environmental and urban economics as well as urban history. Combining design studios and focused course modules, it aims to integrate specific knowledge about urban processes, complex ecosystems and transport networks. The modules act as catalysts for the studio projects, and are organised as think tanks in which students discuss with experts from academia and practice. After an additional period of professional experience, graduates can apply for professional registration from the Hong Kong Institute of Urban Design (HKIUD).

MPhil and PhD

The MPhil and PhD are research postgraduate degrees. Students learn primarily by conducting independent original research, usually through participating in the work of the School's design studios or design research units in architectural heritage, community participation, computation and simulation, sustainable and environmental design, housing, etc. In some cases, students may also pursue their own topics if feasibility of the topic can be demonstrated upon application.

Curriculum

	Studio	Humanities	Technology
	BSSc(AS) 1	<i>arch 1001</i> Introduction to Architecture: People and Places	
	BSSc(AS) 2	<i>arch 2221</i> Visual Studies <i>arch 2322</i> Cultural Contexts I <i>arch 2323</i> Cultural Contexts II	<i>arch 2413</i> Building Technology I: Materials and Construction <i>arch 2422</i> Building Technology II: Materials and Construction
	BSSc(AS) 3	<i>arch 3113 / arch 3114</i> Architectural Design Studios I & II [Studio Analyse / Studio Build]	<i>arch 3424</i> Building Technology III: Environmental Technology
	BSSc(AS) 4	<i>arch 4115 / arch 4116</i> Architectural Design Studios III & IV [Studio Community / Studio Develop]	<i>arch 4425</i> Building Systems Integration
	total units 78	30	18 12
	Year Out		
	MArch 1	<i>arch 5110</i> Advanced Architectural Design Studios I	<i>arch 5321</i> Architectural Theory and Criticism <i>arch 5421</i> Advanced Building Systems I <i>arch 5422</i> Advanced Building Systems II
	MArch 2	<i>arch 6110</i> Advanced Architectural Design Studios II	<i>urbd 5703</i> Urban History and Theory (to substitute <i>arch 5721</i>)
	total units 52	28	6 6

Design Computation

Professional Practice

Electives and Year I Faculty Package

Students elect two non-architecture courses from the Social Science Faculty Package (except advanced standing students who elect one).

arch 2222
Digital Media

arch 4426
Future Practice and Sustainable Response

arch 4131
Topical Studies in Design Theory

3

3

12

arch 6521
Professional Practice and Management

arch 5131 Topical Studies in Design Theory
arch 5231 Topical Studies in Computational Design
arch 5331 Topical Studies in History, Theory and Criticism
arch 5431 Topical Studies in Building Technology
arch 5531 Topical Studies in Professional Practice and Management: Future Practice and Sustainable Response
arch 5731 Topical Studies in Urbanism

3

9

Calendar

2022-23 Term I

week	event	date
1	First teaching day	05.09 M
2	Day following Mid-Autumn Festival	12.09 M
3		19.09 M
4	National Day	26.09 M 01.10 Sa
5	Chung Yeung Festival	03.10 M 04.10 Tu
6		10.10 M
7		17.10 M
8		24.10 M
9		31.10 M
10		07.11 M
11		14.11 M
12		21.11 M
13		28.11 M
14	Examination period begins	05.12 M 07.12 W

2022-23 Term 2

week	event	date
1	First teaching day	09.01 M
2	Lunar New Year holiday begins	16.01 M 21.01 Sa
3	Lunar New Year holiday ends	23.01 M 27.01 F
4		31.01 M
5		06.02 M
6		13.02 M
7		20.02 M
8		27.02 M
9	Reading week begins Reading week ends	06.03 M 11.03 Sa
10		13.03 M
11		20.03 M
12		27.03 M
13	Ching Ming Festival Easter holiday begins	03.04 M 05.04 W 07.04 F
14	Easter holiday ends	10.04 M
15		17.04 M
16	Examination period begins	24.04 M 26.04 W

BSSc (AS)

Programme Director

Zhu Jingxiang

The BSSc (AS) programme offers design education and preparation for professional practice as an architect. The core studies consist of design studios in addition to courses and electives offered in humanities, technology, representation and professional practice. Students accomplish their learning experiences through engaging a wide variety of processes, handling tools, working with materials; communicating ideas through drawing, making, modelling, speaking and writing; understanding the technical and social confrontations of architecture; engaging the society in an ethical manner; and most importantly, to think critically and make intelligent decisions afterwards.

Year 1 students explore the University's General Education programme and 'Introduction to Architecture'. Year 2 Studio *Experience & Explore* will offer a series of knowhow and knowledge acquisition modules. In years 3 and 4, Studio *Analyse*, Studio *Build*, Studio *Community*, and Studio *Develop* will investigate the relationship between analysis and synthesis by studying built complex; explore the poetics of material, tectonic, technic, and the craft of details; address the interdependence between people, architecture, city and the environment. The studios in 2022-23 highlight their design missions through a group of verbs, initiated from *Realise*, followed by *Remix*, *Relate*, *React*, *Revive*. The graduation studio under the theme *Recreate* integrates the skills and knowledge obtained in the semesters prior and culminates in a comprehensive architectural proposal with social concerns.

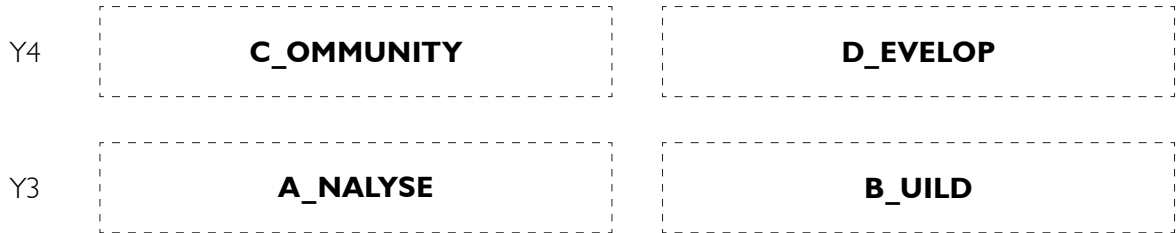
The required courses reflect an integrated pedagogic approach and cross-disciplinary practice. Some courses are organised through an analytical case-study, an approach seeking to broaden the students' vision through a focused examination on the pioneering works. Some others adopt a task-oriented exercise training, an approach seeking to cultivate the students' design application skills through intense knowhow and knowledge apprehension. A balanced path to both the architectural knowledge and the application knowhow bridges across the subject areas of humanities, technologies, and communications.



Studio Structure



[innovate]



[integrate]



[initiate]

Studio E

DESIGN STUDIO



final wooden house, sou fujimoto, 2006

experience | to realise

arch 2111

arch 2111 + arch 2112 investigate an experienced world, an integral part of daily human life, through a structured process. The aim is to expose the students to an enchanting sequence of experience, a precise kit of tools and set of methods; and a spectrum of pioneering cases.

The first studio *Experience* is organised in 3 phases, introducing exercises and knowledges for two key issues, Material and Space, with a purpose to realise the initial articulation of a spatial concept with a specific material-related construction. Phase 1 *Matter* introduces fundamental space types and construction types resulting from the basic formal types. Phase 2 *Relate* discusses how space types can be restricted, regulated, supported or inspired by the construction types. Phase 3 *Realise* involves design issues of body, scale and purpose through a design project in a simple site with natural elements.

Skills of making and representation are introduced in consideration of each student's capacity to observe, sense, describe, provoke, conceive spiritual spaces in an elegant physical form.

REQUIRED COURSES

Visual Studies

arch 2221 Kelly Chow t1

This course introduces visual media, examining how its history and ideas can help develop our critical understanding of spatial design. The course offers an overview of the subject for those with little or no visual art + design background and is intended to provide a sense of visual literacy. The course is designed to develop skills of observation, interpretation and creativity, as well as giving a strong intellectual grounding in visual thinking, and the form, meaning and content of visual media.

Cultural Contexts I

arch 2322 Tatjana Crossley t1

What is architecture but the sum of its parts, which produce particular atmospheric and experiential qualities and are informed by culture and society? This course breaks down architectural history looking at various architectural elements and how they have evolved over time, manifesting differently around the world. We will use the study of buildings, their design and their construction in order to understand more about their historical narratives.

Building Technology I: Materials and Construction

arch 2413 Zhu Jingxiang t1

The course is designed for studies in materials and construction with an approach based on operation and observation exercises. The process emphasises integrating knowledge framework, observation and exploration related to architectural and construction practice. Students will learn to appreciate the essential knowledge of basic building materials, the ethics of using materials and the importance of tectonic and technical issues.



hui chai yeung, zach

SSF PACKAGE

Design Thinking in Social Innovation

sosc 1001 Maggie Ma tl

Design thinking creates value through systematic innovation. This course introduces students to design thinking theories, methods and skills to apply in the context of social innovation. Design thinking supports development of human-centric solutions, and uses a design-based mindset to provide practical solutions to complex problems. Through interactive experiential learning, students will learn the key concepts and methods in design thinking and apply them to solve a real life social issue.

ACTIVITY

Digital Learning

Modules provided by the Institute of Digital Design (IDDA) are available for self-instruction. This is an online e-learning platform for digital design tools. Modules for term I include: *Adobe CC (Photoshop + InDesign)*.

Studio E

DESIGN STUDIO

explore | to remix

arch 2112



siargao apsaras tribe resort, unitinno

arch 2111 + arch 2112 investigate an experienced world, an integral part of daily human life, through a structured process that the students have yet to experience. The aim is to expose the students to an enchanting sequence of experience, a precise kit of tools and set of methods; and a spectrum of pioneering cases.

The second studio *Explore* introduces tools and methods for processing two more key issues, Program and Site, and further explores creative output. The studio continues in the 3-phase format, exploring the articulation of a spatial / construction concept with the program or site forces. Phase 1 *Use* uncovers the relationship between a familiar program with its peripherals through surveying and investigation. Phase 2 *Mix* focuses on the interaction between program and neighbourhood. Phase 3 *Remix* links the new situations with term I output.

To act on issues with intention is to design. Group exercises, individual assignments, research and studio sessions continue to provide students opportunities to translate issues and ideas within a new context that they are familiar with.

REQUIRED COURSES

Digital Media

arch 2222 Jeroen van Ameijde t2

This course introduces students to the principles of computational design, giving an overview of applications across different scales and stages. Students will develop insights and confidence around the integration of generative procedures within architectural and urban design processes, learning how to control elements within a three dimensional environment. Focusing on the underlying logic rather than specific software, the course helps to build up essential skills needed to participate in current and future practice.

Cultural Contexts II

arch 2323 Thomas Chung t2

This course emphasises the importance of understanding architectural history and theory with respect to culture and context. There is a specific focus on 20th century architects and buildings, a range of key architects' philosophies and approaches and the relationship between architecture and the arts. Students will study architectural works with respect to historical continuities and ruptures, as well as exploring the unity of forms and diversity of solutions.

Building Technology II: Materials and Construction

arch 2422 Xu Liang t2

Establishing on the fundamental principles of statics, the course investigates primary types of structural system in architecture by focusing on their behaviour as well as design parameters. Students will use the method of graphic statics to derive the internal forces and reactions for a few types of determinate structures, and will develop an in-depth understanding of structural principles through appraising and investigating in case studies and design exercises.



winson man

SSF PACKAGE

Introduction to Architecture: People and Places

arch 1001 Kelly Chow t2

This course explores the discipline - its rich relationship with society - and its global impact. The course addresses architecture as a continuous field in flux - presenting case studies that cut across and unfold to show alternate, sometimes contradictory stories about art and design. Through a series of lectures and readings, along with a set of critical terms specific to these times and places, the class aims to foster a rich, complex understanding of the many narratives that the built environment can tell.

Understanding Cities

arch 1002 TBC t1

This course will introduce basic ideas about urbanity and cities for students of the social science faculty. Initiated from an architecture-urbanism perspective, this course will cover cross-disciplinary material on inter-related social, spatial and economic issues. Through seminal text and contemporary media, it aims to equip students with essential knowledge to participate in discussion about cities and urban life.

GENERAL EDUCATION

Experiencing Architecture

arch 1320 Han Man t2

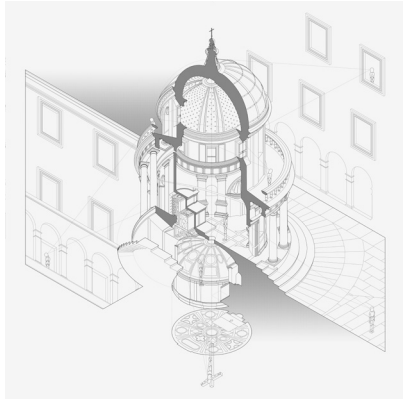
The term 'architecture' in this course specifically refers to the built environment. This course teaches a method of experiencing architecture, with the aim to raise students' awareness of the living environment and equip them with the skills to understand and appreciate architecture as it exists locally and in the global context. Apart from a theoretical framework, basic skills of sketching, photo-taking and writing will be taught as tools to facilitate the experiencing of architecture.

Studio A

DESIGN STUDIO

analyse | to relate

arch 3113



tempietto by brnato bramante,
drawn by office nadaaa

What is Analysis?

Analysis is a process through which we can develop some understanding of complex situations, objects or systems by disassembling them into simpler, fundamental components. Rather than merely separating, compiling, or describing individual components or subsets, analysis is an active, exploratory critique of what is observed. Essentially, analysis can be seen as a process of asking questions that expose [relationships between parts] – hidden patterns and synergies. Are there elements – types, categories, or taxonomies – within the system? Are there operations - patterns of use, activities, or processes – that characterise the system? Why are these elements or operations important? How do they contribute to or detract from the whole? In which way are these constituent parts working together to contribute to a larger narrative?

Studio A is about analysing relationships: what relationships do we see; why are they important; and how we can work with and develop new relationships, with new possibilities. Utilising the tools of design (drawing and modelling), the studio will take the opportunity to analyse – observe, examine, interrogate, deconstruct and ultimately re-construct a topical subject, as a basis for the design and development of an architectural form.

REQUIRED COURSE

Architecture and Global Culture

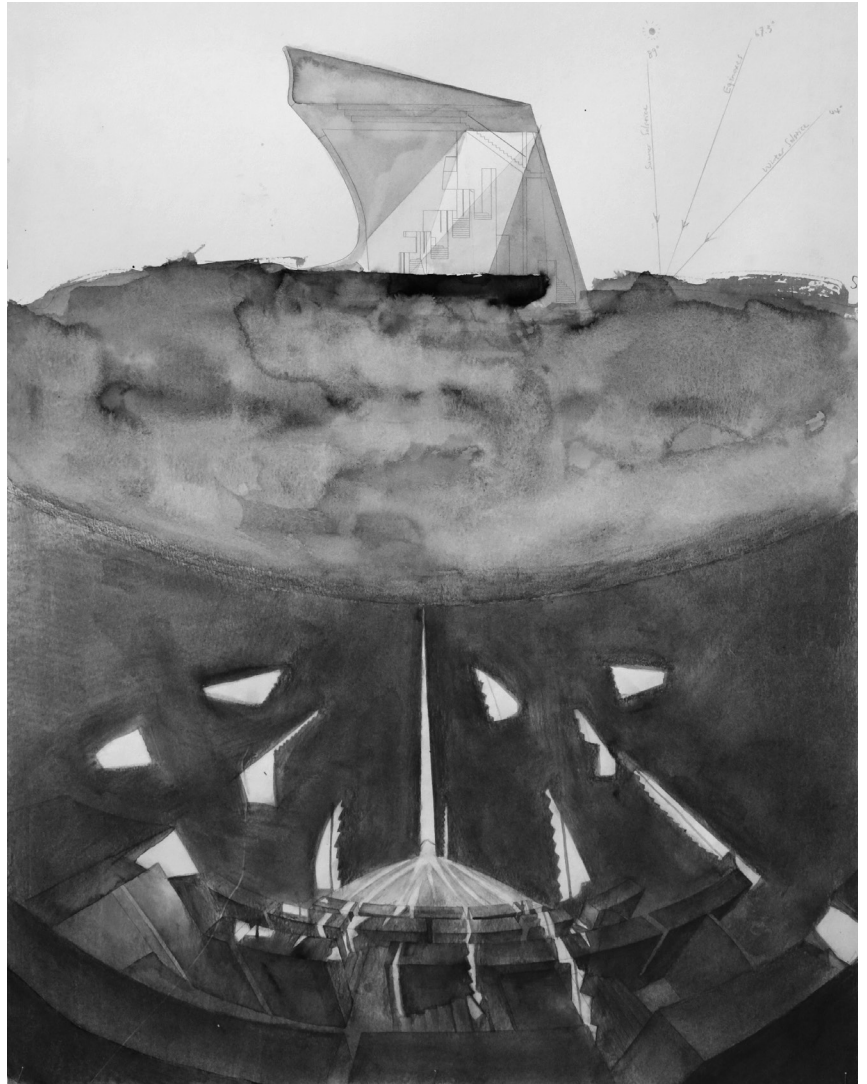
arch 3321 Tatjana Crossley t1

This course examines the built environment through filmic representations of the city. It will interrogate the urban landscape looking at various cities and considering the historical, social, economic and political influences that have created their existing conditions. Each week there will be a film viewing followed the next morning by a lecture and discussion that delves into the respective 'place'. Students will also use film to develop their own critical reflection of Hong Kong.

ACTIVITY

Digital Learning

Modules provided by the Institute of Digital Design (IDDA) are available for self-instruction. This is an online e-learning platform for digital design tools. Modules for term 1 include: *Rhino* + *Grasshopper*, *Revit*.



Studio B

DESIGN STUDIO

build | to react

arch 3114



saint benedict chapel, peter zumthor

Studio B approaches architectural issues through the role of building technology in architectural design. The studio focuses on materials, techniques, and tectonics studies that expose and inform design opportunities and solutions. The central question to ask is what relationships can be established between space, structure, technology, and users, and how they can be intertwined and synthesised. The studio's emphasis is placed on experimentation through the act of making as a way of discovering architectural design.

The studio regards 'building' as an important impetus for shaping architecture and encourages the act of 'making' as design inquiry. The studio activities will engage students in observing, questioning, experimenting, composing, constructing, and synthesising multi-scale parts to the whole of a building. The observation and experimentation with materials and tools will allow students to reveal the inner working of material characteristics, ways of compositing materials and joining, assembling layers of a building, and understanding the connection to the contexts and the users that a building is produced.

The main project of the studio requires students to design a small public building for learning under a specific climate type. The in-depth study should focus on; 1) building materials with availability, environmental impacts, spatial effects, and craftsmanship, 2) structure and construction suite for the specific environment offered by the site and building program 3) an envelope design to suit the environment and to reconcile indoor and outdoor environmental demands for the users, and 4) key construction details that assure functional performances and establish aesthetics of the building.

REQUIRED COURSES

Land and City

arch 3721 Francesco Rossini t2

This course introduces fundamental concepts and ideas of urban design and planning starting from a historical perspective, introducing important theories to analyse and understand the dynamics and complexities that characterise the urban environment. The course aims to develop the essential knowledge in the field of urban planning and design by investigating the critical role that the architecture, combined with the interdisciplinary approach of urban design, can play in creating a better and more livable and sustainable city.

Building Technology III: Environmental Technology

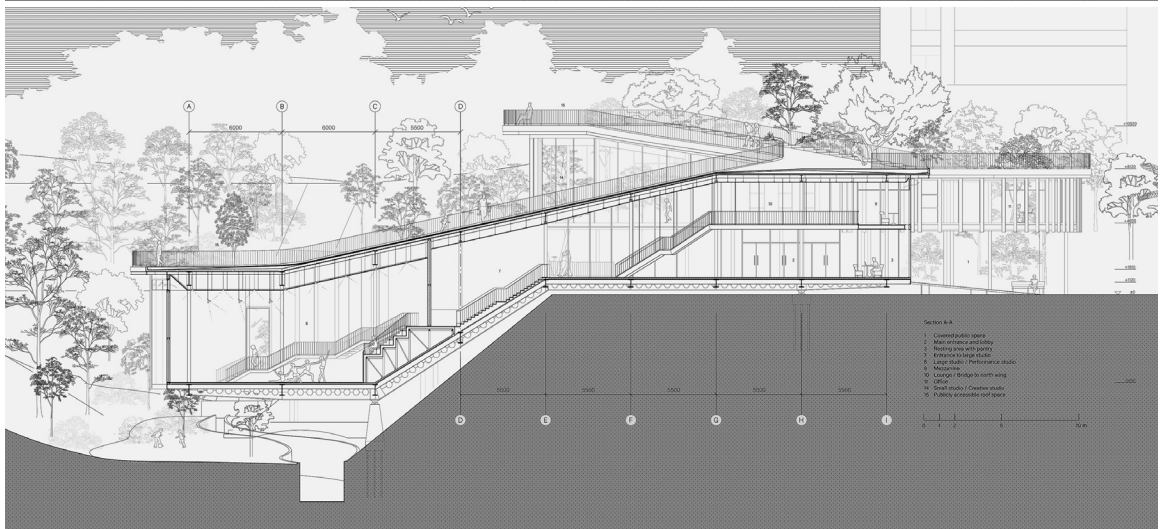
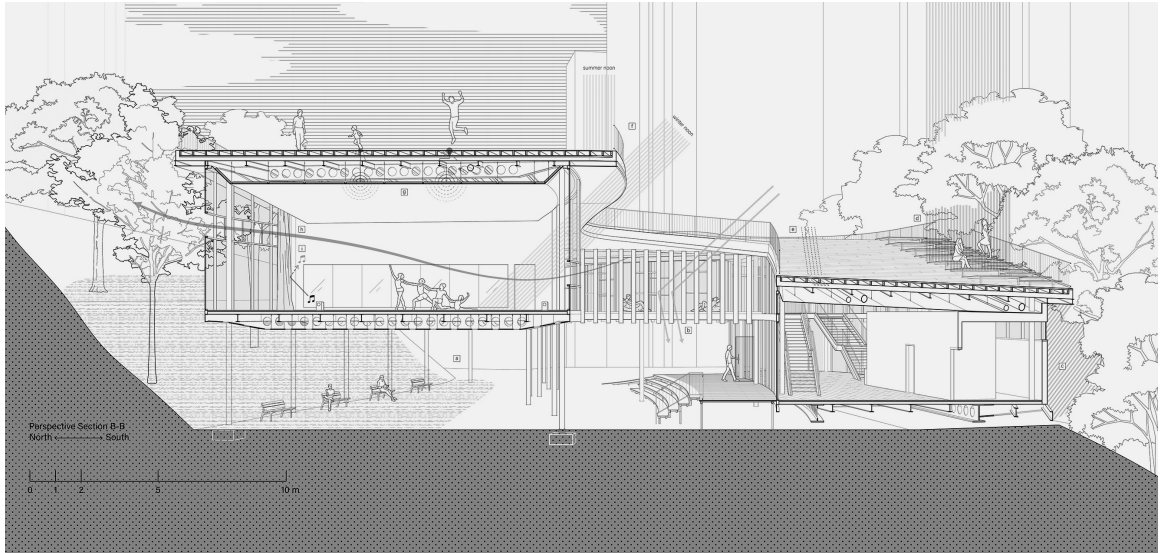
arch 3424 Edward Ng t2

This course introduces the fundamental concepts of passive environmental design, and examines the effect on buildings and their occupants of environmental conditions of light, temperature, air movement, and sound. Case studies are used to review both traditional and current approaches of representative building types in depth.

ACTIVITY

Digital Learning

Modules provided by the Institute of Digital Design (IDDA) are available for self-instruction. This is an online e-learning platform for digital design tools. Modules for term 2 include: *Revit (plug-ins for lighting and wind simulation)*.



Studio C

DESIGN STUDIO

22



*housing units designed by alejandro aravena
in iquiques, chile.*

community | to revive

arch 4115

Making cities and human settlements safer and more inclusive, resilient and sustainable is at the core of Goal n.11 of the UN-Habitat. Nowadays the residential market is dominated by economic interest, and most cities in different areas of the globe face the problem of lacking affordable rental apartments for low-income households. With the change in living patterns during COVID, new reflections are made to revive the life of the communities. Responding to the need to address the joint issues of sustainable housing and urban development, the Community Studio aims to speculate architecture's role in shaping the urban environment by conceptualising alternative typologies.

How to design affordable, sustainable and healthy housing? How will the communities inhabit the new living spaces? How can communal life and social activities take place? How will the boundary between private and communal space be defined in the future? How do residents shape a community? What is the role of the community in designing co-living spaces? These are some of the critical questions that the students have to address during their architectural exploration.

The studio will explore how living concepts could be adapted to different social contexts and urban conditions. Students will focus especially on the relationship between collective spaces and living units as well as to explore how to generate meaningful interactions between residents and the rest of the city. Combining hybrid programs with shared and collective facilities, students have to accommodate the diverse needs of the community.

REQUIRED COURSE

Building Systems Integration

arch 4425 Hiroyuki Shinohara tl

This course builds upon fundamental topics covered in the building technology sequence—materials and construction, building structures and environmental technology - with the objective to introduce an overarching perspective of the design and integration of the building systems in making of a building. Through case studies of modern and contemporary buildings, it investigates the building systems integral to an architect's vision and design intent, and serves to make critical design decisions.

ELECTIVE COURSE

Designing With the Site

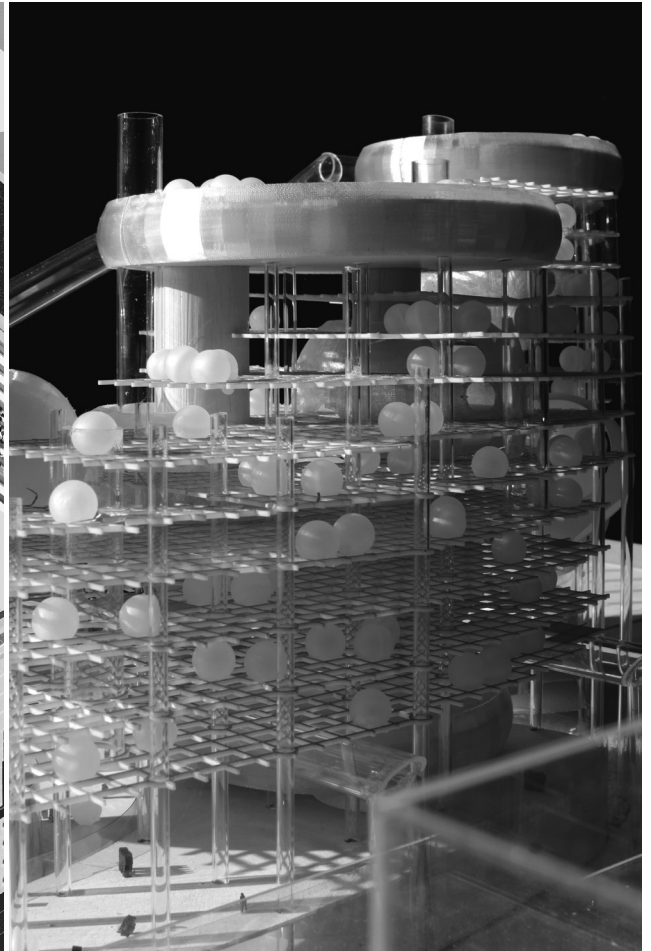
arch 4131A Wataru Shinji / Lily Zhang tl

There is no such thing as empty space. In this elective course, we would like to consider transforming the unused areas into quality space by connecting the surrounding context. This course illustrates how architecture co-exists with its neighboring buildings and environments. The aim is for students to collaboratively craft a 1:1 scale high quality spatial project, testing an array of architectural ideas.

ACTIVITY

Digital Learning

Modules provided by the Institute of Digital Design (IDDA) are available for self-instruction. This is an online e-learning platform for digital design tools. Modules for term I include: *Rhino + Grasshopper*.



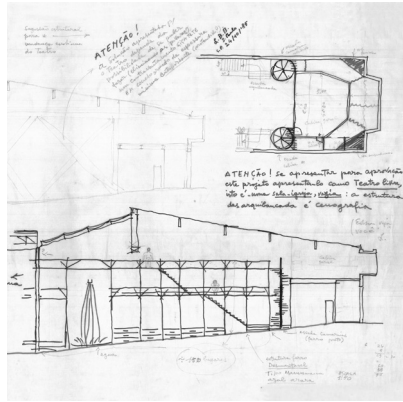
left: liang qiongdan, tse yuen wing, wang shun hang; right: helen mak, jonathan, ruby ng

Studio D

DESIGN STUDIO

develop | to recreate

arch 4116



teatro oficina, linea bo bardi

To meet housing demands, new urban developments often predominantly focus on creating residential buildings while falling short of public functions. Yet, to generate vibrant public life and a collective urban identity, incorporating a variety of public programs is essential. Culturally meaningful buildings can be a mechanism to enhance quality of life and act as catalysts for improving their environment. Studio D will investigate the public realm and (re) discover social life through detailed observations and inspiring solutions that aim to revitalise public life in contemporary building and urban design.

This year, Studio D explores a 'social condenser', a (semi)public building that will be implemented within an existing context with the aim of injecting social program according to the society's needs. The designs will (partially) re-use and expand on existing structures, rather than envisioning entirely new buildings. Students will start conducting thorough site research, including analysing the urban context and its inhabitants which is studied through several types of data collection. Students are then asked to translate the outcomes of the research into a comprehensive architectural design proposal integrating the skills and knowledge obtained in the prior five semesters.

REQUIRED COURSES

Future Practice and Sustainable Response

arch 4426 Maggie Ma t2

This course prepares students to practice through the understanding of fundamental roles and values of an architect, with discussions on professional conduct and procedures related to practising as an architect. It is designed to inspire students to look beyond the customary, and consider the ever-changing environment of the future, through the study of alternative possibilities in architectural and spatial practices.

ELECTIVE COURSES

Hong Kong Landscape and City

arch 4131B Wataru Shinji / Lily Zhang t2

In this course, we will look at how people use the various open spaces and vacant lots scattered around Hong Kong and how they can be reimagined in new ways. We will analyse vacant spaces of various sizes, one by one, and understand the unique characteristics of each site, such as topography, adjacent buildings, and local community. This physical, visceral, experiential study of a place combines with research and analytical lens to inform a coherent design response.

ACTIVITY

Digital Learning

Modules provided by the Institute of Digital Design (IDDA) are available for self-instruction. This is an online e-learning platform for digital design tools. Modules for term 2 include: *Rhino* + *Grasshopper*.



above: lincoln chan; below: fenton lau

MArch

Programme Director
Adam Fingrut

26

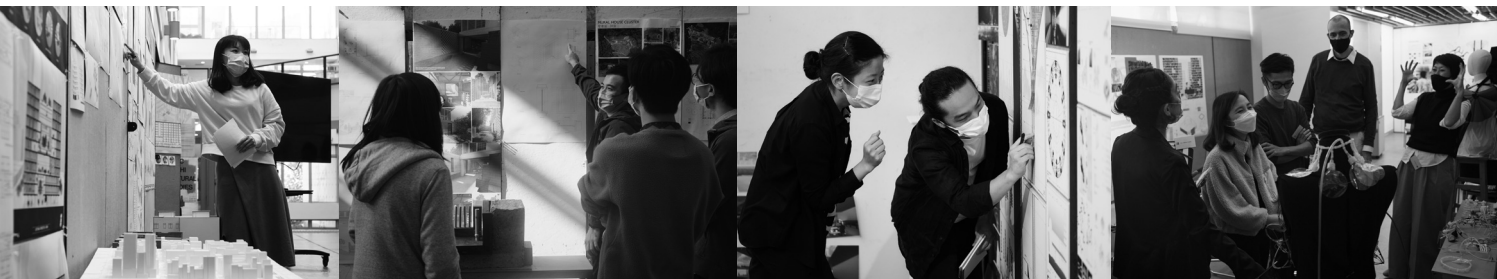
The Master of Architecture at the School of Architecture is a two-year programme designed to provide students with an advanced educational experience focused on design innovation, specialised research, and critical thinking. The programme stresses the importance of architecture as a professional discipline, concerned with design in diverse conditions. The programme's aim is to engage with a broad range of critical issues, teaching methodologies and design agendas that reflect the changing conditions of contemporary practice and emphasise the profound relationship of architecture to the broader problems of the environment and ecological sustainability. The School is uniquely situated within the Faculty of Social Science and offers a unique opportunity for interaction and interdisciplinary design research.

Advanced Architectural Design Studio

The design studio is unique in developing essential qualities among students, such as the adoption of an action-based iterative approach toward problem solving, design thinking, experimentation, and craft. Each studio section is designed to mimic similar conditions and environments found in professional practice, and highlight knowledge development through peer learning, skills development, and professional competency. Studios are structured around two yearlong projects, a pre and a final thesis, organised into vertical studios.

Design Provocations

The design provocation is an approach toward architectural research, and as an opportunity to initiate critical reflection among students, instructors and reviewers, on issues pertaining to design development throughout the course. Each studio instructor assumes the role of provocateur and engages with students to develop original responses that can illuminate their position, complexity of design proposals, and highlight the forces driving their architecture. Students will instigate stimulus and encourage others to consider a novel, and more critical vision on the future of architecture, urban, and social opportunities that frame their work.



12 Design Studios, 12 Provocations

The programme offers 12 Design Studios that provoke an original response toward the future of architecture. Each studio has its own agenda, ambition and is committed to a specific form of applied architectural research:

1. *THEATRICAL MAXIMAL* - Chan Chi Yan / Juan Minguez / Betty Ng
2. *DECONSTRUCTING SUSTAINABILITY FOR THE ARCHITECTURE OF CONSUMPTION* - Fergus Corner
3. *CONDITION_OPEN STUDIO AFRICA* - Peter W. Ferretto
4. *EAT-DESIGN-BUILD* - Adam Fingrut
5. *URBAN COMMONS* - Eric Ho / Rick Lam
6. *MEDIUM SCALE: REIMAGINING COLLECTIVITY IN HONG KONG HOUSING* - Simon Hsu / Sebastian Law
7. *DEEP STRUCTURE: TRANSFORMATIVE STRATEGIES FOR THE GENERIC OFFICE TOWER* - Holger Kehne
8. *THE MAGNITUDE OF SMART DEVELOPMENT* - Lam Tat
9. *SANCTUARIES FOR SPIRITS / SPIRITUAL DWELLINGS* - CY Lau / Manfred Yuen
10. *NET ZERO POWER AND WATER DESIGN STUDIO* - Sky Lee / Yutaka Yano
11. *DESIGNING ENVIRONMENT* - Wataru Shinji / Lily Zhang
12. *IN SEARCH OF ORGANISED COMPLEXITY* - Wang Zhenfei

Structure

All Design Studios are subdivided into 4 parts, leading to a final project developed over two terms.

Part 1 – PROVOCATION

Students start their design journey by establishing a research process, understanding, and challenging the brief, contextualising the topic, and articulating a position. They are introduced to multiple Design Research Methods: Understanding Context, Architectural Surveying, How to Assemble Material, Systematic Observations, Human Behaviour.

Part 2 – EXPLORATION

During this design experimentation phase, students formulate ideas by testing propositions. Emphasis is placed on the synthesis of research within a design framework. A broad range of teaching methods are adopted to reflect the agenda and context of the studio. At the end of this phase, all studios have an integrated trip.

Part 3 – PROTOTYPE

The phase where an idea is translated into a design proposal. Through a process of trial-and-error students demonstrate that their creative decisions are based on research, analysis, and precedent studies. This phase concludes in the development of a 'Technical' dimension, setting out in detail the technical implications of the design strategy, which will be included in the final Project Book.

Part 4 – PROJECT

The final phase focuses on the development of a complex architectural project that addresses the ambition of the brief and ambition of the initial hypothesis. Students must articulate, via an architectural lexicon, a high-level design project that offers innovation, provokes experimentation, and articulates a clear architectural discourse.

MArch

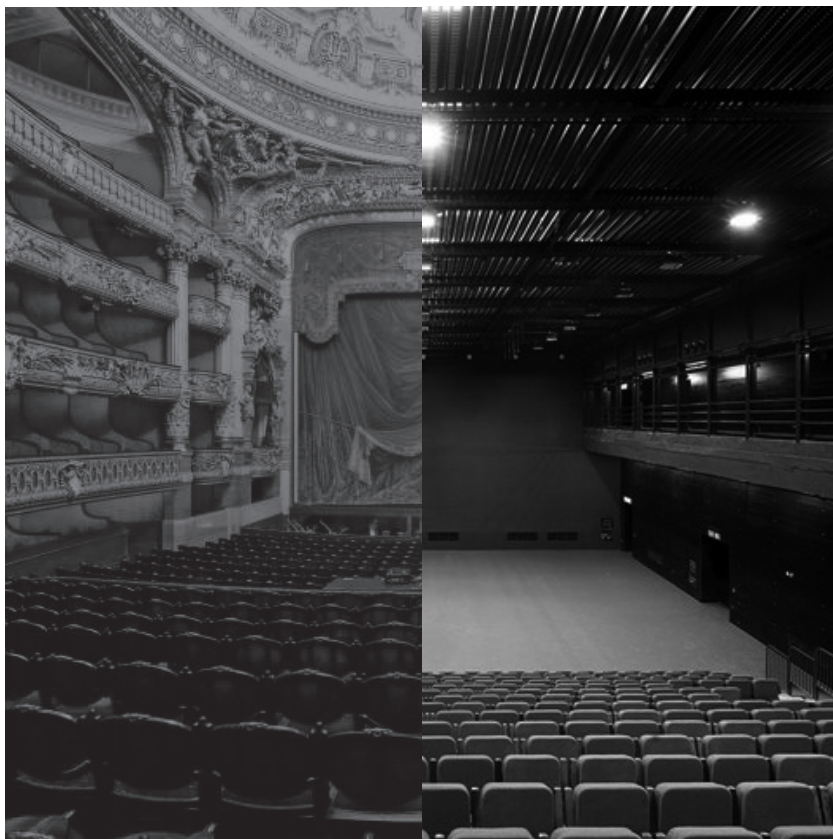
DESIGN STUDIO

Chan Chi Yan / Juan Minguez / Betty Ng
Theatrical Maximal

Hong Kong has maintained an impressive effort of providing a variety of performing arts spaces, despite the majority of them being traditional in their physical planning and scale and lukewarm in its ambition to embrace a greater variety of genres and mediums of works. Is there a possibility to create a performing arts space that can initiate new forms of performing arts? Or is there new form of performing arts that will need a new definition of performing art spaces? In this studio, we aim to take on the charged iconic history of the Tsim Sha Tsui Waterfront together with the sheer monolithic presence of the HK Cultural Centre to consider what a contemporary performing arts venue extension might mean. The studio aims to identify the current and future potential range of program hybridization, stakeholders and networks at play for 'Theatre Maximal'. Together we provide new scenarios not only for a new HK Cultural Centre, imagining possible interventions to the iconic waterfront, but also strategies to stimulate elements in the performing arts world as means to fuel the cultural environment in Hong Kong.

Biography

Betty is the founder and design director at COLLECTIVE. Before setting up COLLECTIVE, Betty was Design Director at OMA Rotterdam, leading many winning proposals and projects. Chan Chi Yan leads the architecture projects at COLLECTIVE. Before that, Chi Yan was at Herzog & de Meuron, serving as project manager for the Tai Kwun Center for Heritage and Arts project. Juan leads the creative direction and architecture projects at COLLECTIVE. Before that, he worked at OMA, SO-IL and practiced in Madrid with Frechilla & López-Peláez Arquitectos.



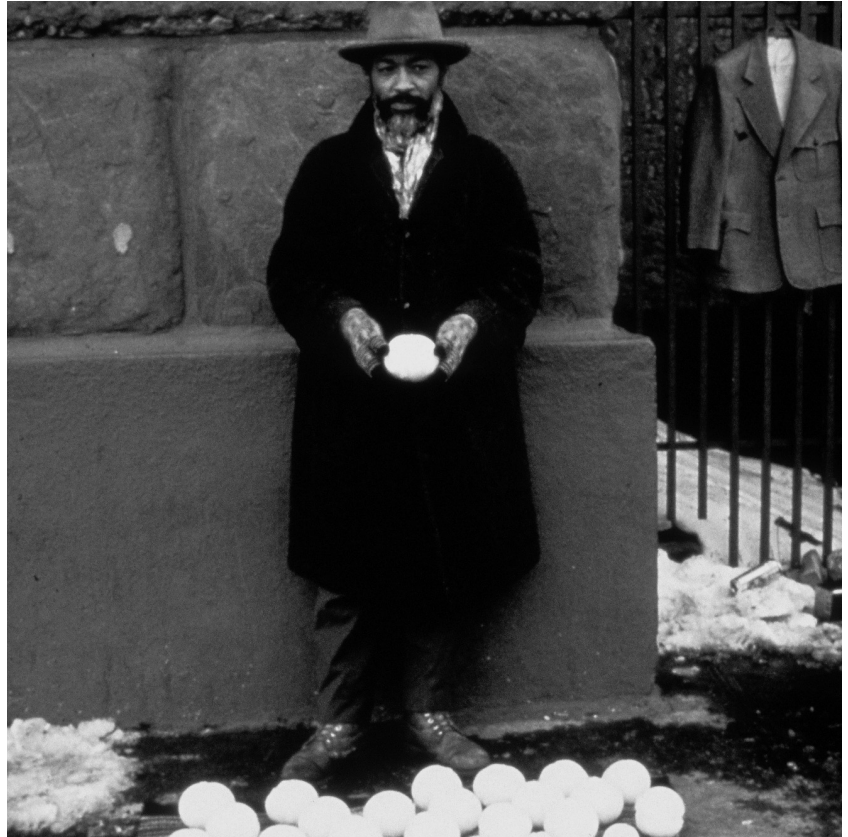
palais garnier, paris / freespace black box theatre, hong kong

Fergus Comer
*Deconstructing Sustainability for the
Architecture of Consumption*

The 2030 Agenda for Sustainable Development includes 17 Sustainable Development Goals that define how member states can work together to end poverty and other deprivations, whilst addressing climate change and the preservation of the environment. Hong Kong tops the world in relation to the hyper-density of its urban environment, which relates to Goal 11 for Sustainable Cities and Communities, and as the leading consumer per capita in the world, which relates to Goal 12 targeting responsible consumption and production. Can we as architects take a broader view of the challenge in addressing these two goals by unpacking both the nature of the construction and the consumption driving it? The studio will apply contemporary and sustainable thinking to this architecture of consumption, and find hybrid functional, spatial and material arrangements for a circular economy that directs waste back into the process to reduce disposal and resource use, forming and re-forming physical, communal and economic links across the island of Tsing Yi.

Biography

Fergus is a registered architect from the UK. Since 2014 he has led his own practice in Hong Kong and combines this with teaching and research. As an architect he is interested in how a project can be made both useful and extraordinary by understanding the peculiarity of its physical and cultural context.



David Hammons selling snowballs in New York, 1983

MArch

DESIGN STUDIO

Peter W. Ferretto

Condition_Open Studio Africa

Condition: Noun or verb that refers to a favourable or unfavourable state of something (noun), or to adapt to the surrounding culture (verb).

30 Open Studio: A studio that interrogates rather than imposes. Students are encouraged to develop their theoretical framework. Open in the sense of: in operation, ready to use, public, not restricted, willing to receive and most importantly willing to consider new ideas.

Africa: Taking risks, working outside your comfort zone, and applying your knowledge to places you know little about enables us to put into practice our knowledge and help people in need.

The studio is interested in developing projects that address education, cultural, and social welfare issues through participation. Working in conjunction with the UN-Habitat Rural Urban Programme based in Nairobi Kenya, students will develop creative and innovative solutions to tackle pressing social, cultural, environmental, health and economic issues through the lens of design.

Biography

Peter's research focuses on understanding urban/rural territories through design prototypes. His research subjects include architectural urban typologies of Seoul, residual urban spaces of Hong Kong, everyday urban conditions, contemporary background city, reactivating the social spaces of Chinese ethnic minority villages and prototype solutions for a self-build timber house in rural China.



community participation gaobu, hunan.

Adam Fingrut
Eat-design-build

Globally, regionally, and locally, our current food consumption rates are unsustainable. How and what we eat is in dire need of change. This studio provokes students into considering the future of food and dining service, as a design problem that reminds us to 'think globally and act locally', while drawing semiotic connections between food chemistry, and building materials. Students will advance their design ideas and research toward the development of an original architecture and position that considers the preparation, assembly and consumption of dishes and spaces.

This studio can be understood in two different ways. Firstly, it explores the role of technology as a conduit for architectural design and construction methods. Secondly, It is important for students to consider different F&B typologies in Hong Kong and beyond.

Biography

Adam's research focuses on understanding how new technology can innovate design, fabrication, and construction methods in architecture. He is also the co-director of the Centre of Robotic Construction and Architecture at CUHK, which explores the use of advanced design and robotics for innovative architecture. His teaching demonstrates how emerging technology is integral to design thinking by exposing students to a process of discovery learning.



MArch

DESIGN STUDIO

Eric Ho / Rick Lam

Urban Commons

Traditionally architects and owners rarely look beyond the site boundary; if one were to truly engage our neighbours, our streets, and our locale, one would be able to understand the problems, to seek collaborations, to bundle resources and to identify new solutions for the greater good.

This studio, through a methodological approach to examine our context, will explore the interactions between people, architecture, streets, and the neighbourhood to develop comprehensive Urban Commons proposals that cover strategies, engagement, business models, management, and design. We will examine the production of Urban Commons through different ways to share, access, and appropriate urban forms of resources for all. We will bring in real neighbourhood stakeholders from various disciplines and fields to provide input to the students to enhance their projects.

Biography

Eric is an architect, entrepreneur, and urban thinker passionate about architecture and urban environments that have a lasting impact on the society. He has also started a civic start-up as a real estate platform for short-term commercial uses, and a shared economy platform for retail. Rick is the co-founder and director of Architecture Commons. He has extensive work experience in Hong Kong, Tokyo, Boston and New York on projects that span every scale from residential renovations to master planning.



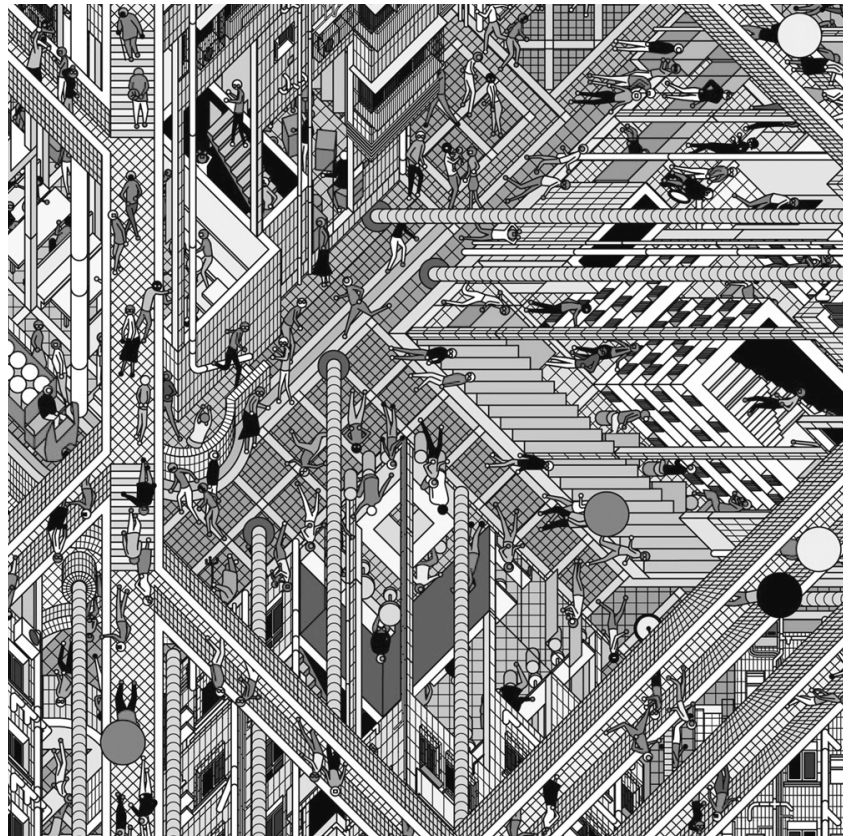
a spiritual retreat by groundwork, 2014

Simon Hsu / Sebastian Law
Medium Scale: Reimagining Collectivity in Hong Kong Housing

Hong Kong built over 2 million square meters in 2020, of which over 1.3 million square meters is for domestic use. This is almost a double of the area for non-domestic use. Yet, the housing crisis continues. The majority of the 1.3 million square meters of domestic use projects consist of large, single phase residential developments that rival the size of small towns. The majority of these projects are designed in two scales: the extra-large scale, where the tower and podium typology monopolises the housing landscape; and the extra-small scale, where the unit layout plans are intricate puzzles that serve to maximise saleable area and minimise the imagination of habitation. Neither scales speak to the collectivity and communal aspiration of housing, which we define as the medium scale. This studio seeks to see architecture as an active participant in shaping communal living. How do we live with others? What are the spaces that define us as a community?

Biography

Simon has in his years of professional experience worked on a wide range of projects. He has worked at Pei Cobb Freed & Partners, Aedas as well as Herzog & de Meuron. He also co-founded io Architects in 2006. Sebastian's extensive design and management knowledge base covers a wide spectrum of architectural experiences. These include master planning, large-scale infrastructure, commercial, institutional and 'destination' public buildings and complexes.



diamond village, drawing architecture studio

MArch

DESIGN STUDIO

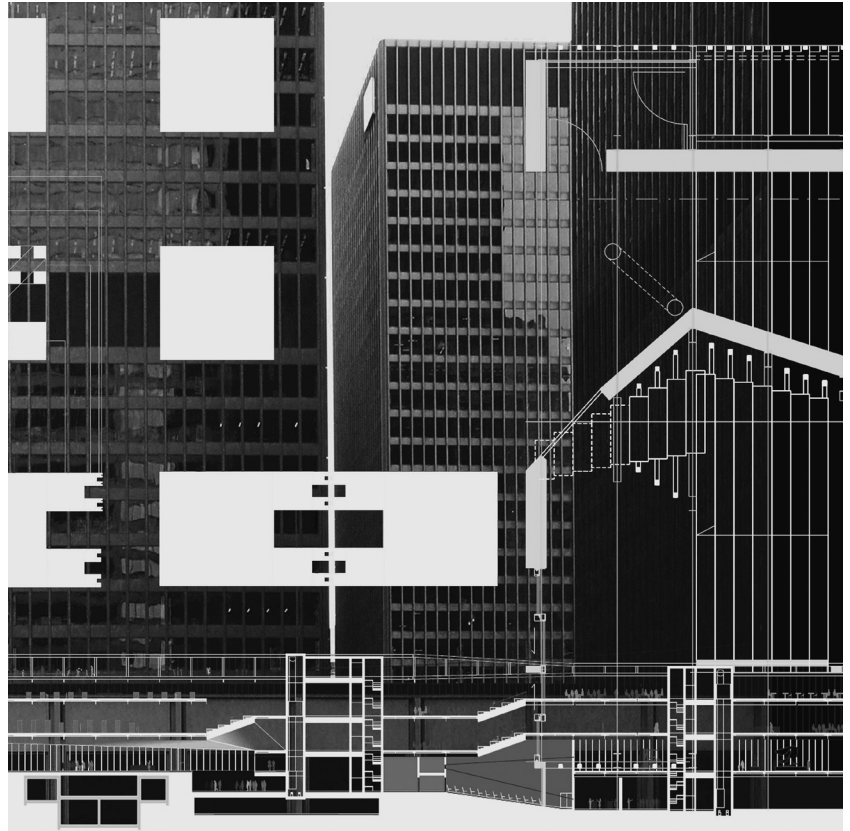
Holger Kehne

Deep Structure: Transformative Strategies for the Generic Office Tower

Despite its ubiquity and proliferation, no building type appears as outdated as the office tower. Discrete, monotonous, monofunctional, energetically wasteful, it offers little else to its users than a pigeonhole within a matrix of generic space, while context, the public, other programs, events, and practices of subjectivity are resolutely excluded. Vast, undifferentiated expanses of floor space constitute an active field, where potential for new social configurations and dynamic, adaptive systems are blocked by outdated and inflexible values, incommensurable logics, temporalities, and technologies. This studio will deploy the existing material reality of various office clusters in Hong Kong as testbed to navigate the complex social, cultural, and economic vectors for projecting new visions for a sustainable and inclusive city fabric. Structure's generative opportunities will invert stratification and zoning into potent, topologically ambiguous spaces through which social and cultural concerns are to be articulated and explored.

Biography

Holger co-founded the experimental practice Plasma Studio 1999 in London, winning numerous accolades while completing a wide range of buildings, interiors and urban projects in Europe and China. He aims at engaging practice and academic research in unison. His research is context- and material driven, exploring systemic relationships across scales, types and registers.



Lam Tat

The Magnitude of Smart Development: Designing New Urban Future(s) via Digital Participatory Tools in the Metaverse for Africa

There is a trend for new cities to be developed overnight in the developing regions of the world. It might be due to the actual needs of local people, newly emerged technologies or simply pride. There are also de facto critical theories for this type of development in the last decades, including tabula rasa planning, ignorance of local culture and even 'green wash'. In this studio, we would like to take a post-critical perspective, and directly confront this trend in the world, to explore how a totally new city should be designed with new technological tools and collaborative methods. This studio will mingle design methods of digital design for metaverse, urban design and architecture design. Our goal is to design architectural and urban interventions based on the virtual realities we created from both physical realities or imaginations to address issues such as equity and equality of rapid new city developments in the developing world.

Biography

Lam Tat was trained as an urban designer and architectural researcher, and has practiced in urban design and regional development consultancy in the last 10 years. He is currently the director of Studio X Beijing of Columbia University. He is particularly interested in developing holistic social development solutions for governments and institutions.



oxagon, an aquaculture-focused industrial centre planned for the red sea coast of saudi arabia

MArch

DESIGN STUDIO

CY Lau / Manfred Yuen

Sanctuaries for Spirits / Spiritual Dwellings

Architecture – pre-historically – were of spiritual nature. Architecture was almost invented for spiritual needs before the physicals. Man may live in caves and sleep on hay stocks at night, while they devour their sweat and blood on the Stone Henge and the Moai on Easter Island. What motivated them? Perhaps one of the greatest ironies of our civilization is how we have reverted the above development: we are investing more concrete than ever for the abundances of dwelling spaces. Are our current dwelling spaces sanctuaries for our souls, or simply 'machines for living'? Mankind has always been calling for spiritual spaces that resonate with our internal worlds. Spiritual architectures are not all religious: they provoke self-awareness so that we may establish the (re)connections with others and the universe. Spiritual architecture shall therefore respond to our internal cravings and aid the creation of our internal world. The studio will first be explore spaces that uplift spirits, then move to the other end and explore how we may infuse spirituality into our current living environment in Hong Kong and how they may influence our society.

Biography

CY joined Groundwork Architects & Associates as a partner in 2015, leading the team to tackle the most challenging projects of the office. He previously worked in the Aedas Ltd. and MLA Architects, where he also served as an associate partner. Manfred is the co-founder of Groundwork Architects + Associates, Hong Kong and Shenzhen in 2011. He also served as a visiting lecturer at Kingston University, London and the Hong Kong Polytechnic University School of Design, teaching architecture design and history.



a spiritual retreat by groundwork, 2014

Sky Lee / Yutaka Yano

Net Zero Power and Water Design Studio

Can architects create built environment as part of the ecology? What are the possible design processes that allow architects and their collaborators to design, synthesising the critical issues on creating sustainable environment in the future? The studio provokes students to consider architectural positioning, when there will be profound cultural shift in the way architects operate within the industry, notably ongoing transformation of the 4th Industrial Revolution with advancement in both Nano and Bio-technology, Digital Fabrications, Environmental / Spatial Digitisation and ubiquitous Mobile Networks that are currently transforming the fabrics of our world.

Working with the rural village site in Sha Lo Tung with complex issues, students will be challenged to push the boundary in spatial design, relying on their intuition and critical thinking to explore their architectural representations and craft.

Biography

Sky is the founding director of SKY YUTAKA. Previously she was the Adjunct Assistant Professor of CUHK School of Architecture and part-time lecturer at the University of Lincoln of UK. Yutaka co-founded SKY YUTAKA and has been Adjunct Assistant Professor of CUHK School of Architecture. His commitment to the improvement of the built environment has been demonstrated through numerous years of professional experience.



MArch

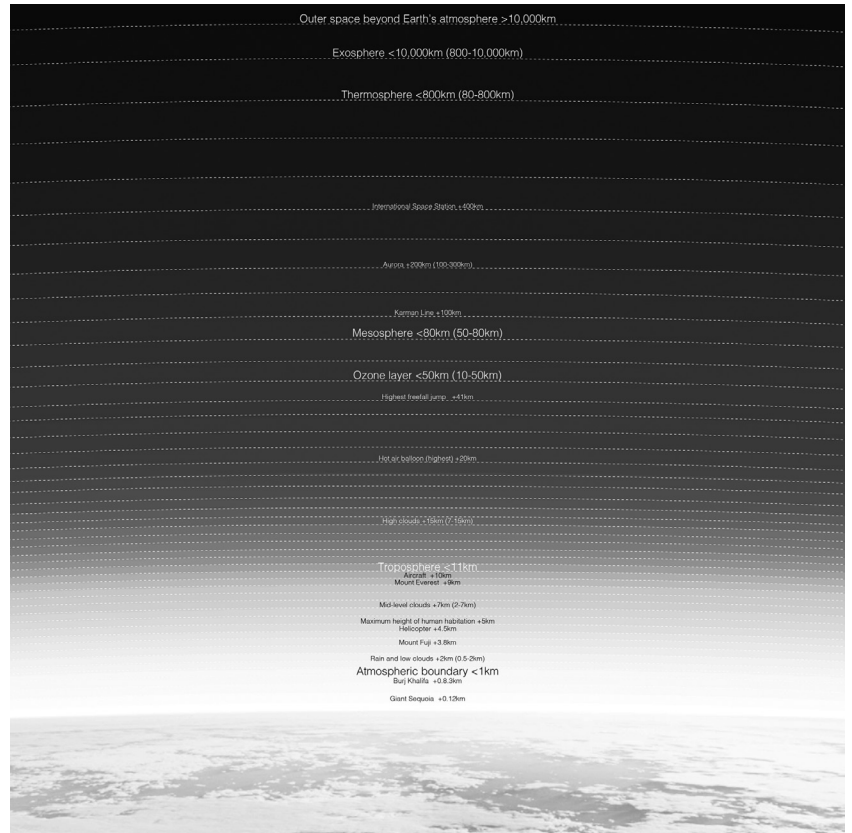
DESIGN STUDIO

Wataru Shinji / Lily Zhang *Designing Environment*

From the human perspective, nature seems to be an incredibly large entity. Naming nature as nouns (e.g., mountains, oceans, etc.) may give the impression that they are names of places, yet in fact they are vast, enormous forms of life that interact to create new natural environments. All of nature and its multitude of connections, together with the emergence of new forms of nature, are made possible by the environment of the shared planet we all inhabit. The scale of a 'city' in today's society approaches the scale of nature. Gigantic and artificial cities entirely created by humans can be recognised as a large environment that brings impact to its surrounding nature. By critically interrogating the tension between nature and human in this studio, we carefully study and rethink the idea of architecture, explore its inherent connections with its surroundings, and expand the possibilities of design by creating scenery together with architecture.

Biography

Wataru is a designer whose interests lie not only in architecture but also on exploring space for other living beings on the planet. Lily is a designer whose work and research focus on designing environment through the interaction of the natural and the artificial. Their research interests include design environment, human and non-human living space, natural and artificial interaction, new possibilities in architecture and global material systems.



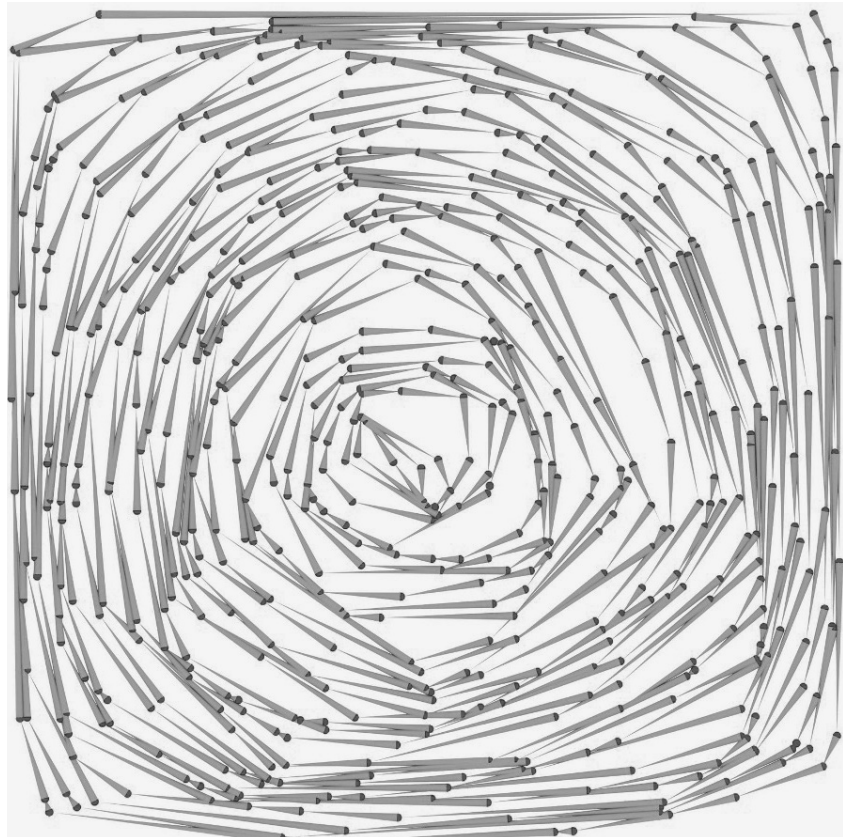
Wang Zhenfei

In Search of Organised Complexity: The Municipal Services Building 2022

Architecture is a complex system, life is another. Can we organise the complexity and make life better? In Hong Kong, the municipal services building is a special building type closely connected to everyday life. It contains many different public programs such as gym, library, market, restaurant, etc. The complex user groups and social activities make it an interesting place to study. The studio will focus on designing new municipal services buildings in Hong Kong and find new ways of intervention through cutting-edge design and research methods. Students will learn to use toolboxes to create their design prototypes based on mathematics, geometry, algorithms, structural principles, etc.

Biography

Zhenfei graduated from the Berlage Institute in Rotterdam, and is the co-founder of HHDFUN in Beijing and the Digital Architecture Design Association (2013-). He is interested in incorporating elements from various fields to produce architectural designs distinguished from the conventional ones. His research also focuses on constructing complex structures within environments of low level of technology.



MArch

REQUIRED COURSES

Architectural Theory and Criticism

arch 5321 TBC t2

This course explores ideas that lie behind the appearance of buildings by examining key theoretical and philosophical ideas. The online format of this course permits a diverse range of international experts to deliver twelve lectures, each addressing a specific theme. Architecture is discussed in dialogue with the visual arts, literature, philosophy, and politics of its time, to reveal illuminating contextual relationships that underpin our understanding of the relationships between architecture and other areas of creative and scholarly endeavour.

The aim of the course is to build an intellectual foundation to design practice - students will learn how to 'read' buildings differently, and how the design of buildings and places can connect to broader spatial and cultural practices.

How Will We Design in the Future? Advanced Building Systems I

arch 5421 Adam Fingrut t1

This course presents contemporary and innovative strategies for the integration of building systems into architectural design and construction. Conducted through the study of technology, the course examines problems, possibilities, co-ordination, and dependencies of practical building design and assembly. The course equips students with a working basis and literacy of building systems and an understanding of the role architects plays in coordinating with a team of consultants and specialists.

Students will be expected to 1) identify key building systems and performance requirements; 2) understand current design technologies used to coordinate between architect and specialist consultant; 3) understand contemporary and innovative tools used to develop and refine building efficiency, design effectiveness and systems integration; 4) understand the relationship between building design and performance.

How Do We Document Our Designs? Advanced Building Systems II

arch 5422 Inge Goudsmit / Brian Anderson t2

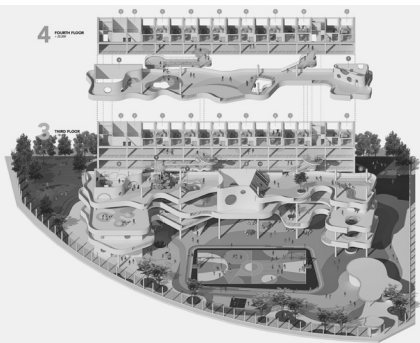
To realise architectural designs, it is crucial to communicate them clearly: to contractors, engineers, clients, building departments, quantity surveyors and other collaborators in the design process. A good documentation enables a smooth(er) design process, and better communication. In this course, we will unravel the complexities of design documentation.

The course focuses on the translation from a design proposal to a drawn documentation for construction, in the form of a comprehensive drawing set. Emphasis will be placed on the development of precise communicative methodologies in the resolution of architectural form and space, as well as compliance to building regulations. Case studies, analytical exercises and representational investigation will establish an understanding of concepts engaged in the translation from drawing to building.

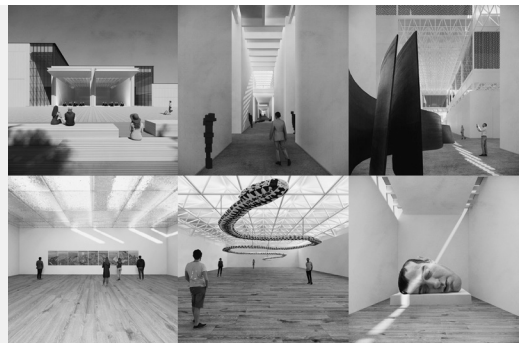
40



au hok yin, bernie



jenny chan



cheung hui yan

Architects in Practice Professional Practice and Management

arch 6521 Hubert Un t1

This course introduces the general structure of the building industry, the professionals and trades associated with the building process. It will offer insights into the statutory and non-statutory control mechanism in Hong Kong on the design and construction of buildings, such as the Town Planning Ordinance, Land Lease, Buildings Ordinance and its regulations, Code of Practices, Design Manuals and Practice Noted for Authorised Persons. The role of Registered Architect and Authorised Person under the legislation will be examined. The Standard Form of Building Contract, duties, liabilities and relationships between the parties, and different types of Contracts will also be introduced. Various resolutions of contractual disputes including arbitration, mediation and litigation will also be explored.

Urban History and Theory

urbd 5703 Hendrik Tieben / Melody Yiu t1

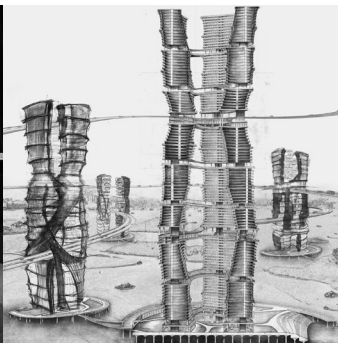
Cities in the 21st century are facing a wide range of challenges from the scale of planetary to national to local and spatial. Extreme weather, social injustice, and the current preoccupation in global health, these seemingly distant issues now require our immediate response.

This course explores the history of urbanisation and its theories, identifying reasons behind cities' evolution, and where we could find potential answers to the pressing urban questions. The course allows students to develop a historical perspective of the current conditions of cities and to reflect on the limitations and potentials of architecture and urban design to tackle today's pressing challenges. The course also aligns with the framework of the UN Sustainable Development Goals and the UN Habitat's New Urban Agenda, in which this interdisciplinary thinking is essential to address the complexity of today's challenges.

ACTIVITY

Digital Learning

Modules provided by the Institute of Digital Design (IDDA) are available for self-instruction. This is an online e-learning platform for digital design tools. Modules for term 2 include: *Rhino + Grasshopper*.



kelly wong

leung lok yiu, vonnie

ngai yu san

Extra-ordinary Arrangement of Loadbearing Components

arch 5431a Zhu Jingxiang t2

As fundamental structural components are widely used in everyday building environment, wall and beam can achieve multiple goals other than bearing the load, such as dividing space, regulating programs, filtering the light, and even responding to a place. In some cases, the precise arrangement of components provoke new spatial opportunities. On the contrary, if the components get covered by false ceiling after an arbitrary arrangement, the tectonic expression may be lost.

This elective course will unveil the enormously multilayered issues of wall and beam design through in depth study on selected cases. The complexity of a case will be clarified through a BIM modelling process, followed by analysis on structure, geometry, and organisation logic. Design exercise on wall and beam arrangement will prepare students for an application of knowhow in their studio work.

Folding Movement: Tectonics of Folding

arch 5431b Hiroyuki Shinohara t2

This course explores the notion of tectonic inspired by Origami. It aims at applying folding knowledge to an architectural creation. Origami – Ori means folding, K(g)ami means paper – is a traditional Japanese paper craft, a form of art that transforms a flat square sheet of paper into a sculpture by folding techniques. Origami develops fabrication techniques of folding three-dimensional objects out of flat paper without having any additional tools to cut or mark. No pins or glues will be used too. Origami turns plain, thin, light, flexible material to rigid and stable being through folding.

Under certain social, political, geographical and cultural contexts, tectonic is defined as structure and materiality that makes a physical building stand. This course explores the tectonics of folding by observing and making Origami and applying the principles to create architectural spaces beyond the original context of the handcraft.

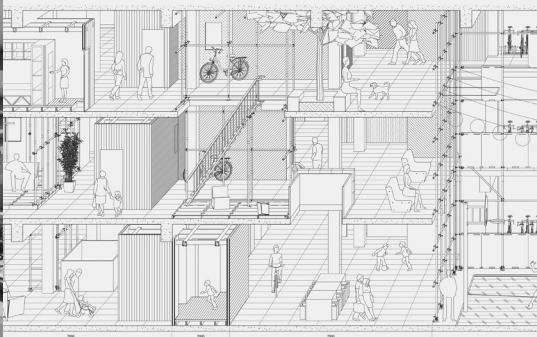
Development Practices in Africa via Blended Impact Finance, Digital Economy and Social Entrepreneurship

arch 5731a Lam Tat t2

How can architecture, urban design, real estate, and technology meet to resolve the most urgent developmental problems of the world in the 21st century? This course will explore creative bankability options for the sustainable development of land, urban space, infrastructure and natural resources in developing contexts. More specifically, students will study and research various new business and investment models by both private and public sectors, using digital technology, such as data technologies, blockchain technologies, digital currency, metaverse etc, to resolve issues like financial inclusion, natural resource preservation, participatory governance and other ethical social business practices. We will combine the exciting developments of both impact finance and fintech-aid business models to explore resolution for developing regions.



man ting fung



billy ng



deng qiwen

Programme Director
Jeroen van Ameijde

In a time of unprecedented global challenges, the need for sustainable and healthy cities has become more obvious. As the world is becoming increasingly aware of the fragility of our ecosystems, human and planetary health, there is a renewed urgency to explore urban design solutions that incorporate principles of social and environmental sustainability, as well as the capacity to adapt to societal changes.

The MSUD programme aims to address these challenges through rigorous research and design projects, focusing on the economic, cultural and regulatory processes that shape cities and the human interactions and experiences that constitute urban life. The courses engage with theoretical and scientific literature, international and regional case studies, and new advanced methods for the analysis, simulation and visualisation of urban areas.

The 16-month programme features a connected studio approach, focusing this year on the notion of "The 'New' New Town". In collaboration with Hong Kong's Planning Department and its partners, we will focus on the development of a series of visionary scenarios and pilot schemes for the Kau Yi Chau Artificial Islands, based on our analysis of the collaborative social processes, function mixing, activity and behavioural patterns within the existing urban fabric of Hong Kong. Using international case studies, field research and speculative urban design proposals, we will reflect on the challenges of planning new urban neighbourhoods for a healthy and sustainable future, while incorporating opportunities for community-led initiatives, entrepreneurialism and the improvement of social capital. Continuing our efforts to engage with data-driven urban studies to gather human-centric insights into the dynamics of everyday urban life, we adopt integrated approaches towards understanding and exploring our current and future urban environments.



Study Scheme

Students are required to complete a minimum of 36 units of courses for graduation.

Required courses: 27 units

Elective courses: 9 units

First Term (2022 / 23):

- *URBD 5710 Urban Design Studio I - 6 units (required)*
- *URBD 5703 Urban History and Theory - 3 units (required)*
- *URBD 5731 Urban Processes - 3 units*

Second Term:

- *URBD 5720 Urban Design Studio II - 6 units (required)*
- *URBD 5702 Environmental and Urban Economics - 3 units (required)*
- *URBD 5732 Urban Transport Networks - 3 units*

Summer Term:

- *URBD 5734 International Workshop - 3 units*
- *Internship Programme* (non credit-bearing)*

First Term (2023 / 24):

- *URBD 6701 Urban Design Thesis - 6 units (required)*
- *URBD 5704 Research methods in Urban Design - 3 units (required)*
- *URBD 5735 Environmental Design for Liveable and Healthy Cities - 3 units*

For the full course list, course outlines and updates, visit the programme website:

<http://web5.arch.cuhk.edu.hk/urbandesign/>

** The internship programme is offered in the summer term to complement the course work. It allows students to gain experience in leading urban design firms in Hong Kong and link their academic research to issues with relevance in professional practice. Participation in the Internship Programme is on a voluntary basis.*

DESIGN STUDIO

Urban Design Studio I a & b

urbd 5710

Jessica Cheung

Melody Yiu



46

The 'New' New Town, Part I

Urban Collaborative Studio: 'Learning from Hong Kong'

The Urban Design Studios explore theories and methodologies around the conceptualisation and development of comprehensive urban design projects based on in-depth research. The 2022/23 academic year will be organised around a combined studio approach, connecting Urban Design Studio I and II under a joint agenda.

The studio process in term I will focus on field work, community engagement and participatory design with various stakeholders in the existing urban cores including both old districts and early generation new towns in Hong Kong. The first stage will consist of strategic research to unpack the complex theoretical, historic, economic and political models that have shaped Hong Kong's urban neighbourhoods and their specific materialisation. Through block and street scale mapping exercises and site investigations, students will learn from local intelligence and discover how Urban Collaboratives function in community collaboration, resource coordination, networks, urban form and public space; and study how urban collaboratives transform local environments into more liveable and sustainable neighbourhoods. As part of this stage, we will engage in a joint workshop with NYIT on 'urban informality', looking at Hong Kong urban transformations through online data and field studies.

With the objective to explore "Hong Kong-ness" in mind, the term I studio will result in the collective construction of an informed narrative on liveability and local communities, and proposals for urban systems, spatial and morphological interventions in diverse urban locations across Hong Kong.

REQUIRED COURSES

Urban History and Theory

urbd 5703 Hendrik Tieben / Melody Yiu

This course examines the main ideas, histories and theories of the city. Important themes and debates in the history of urban design will be critically explored. In particular, the course investigates how urban forms have emerged and later reinterpreted, adapted and challenged by different social, economic and political contexts.

Environmental and Urban Economics

urbd 5702 Sylvia He

The course prepares students to develop criteria for value judgments about the complex social, economic and environmental impact of urban design and planning. A range of topics will be discussed including planning policies, migration, transportation, zoning and livability issues, and potentials for more sustainable, just and livable cities. Students will learn about contemporary urban economic research and online sources of economic data.

International Workshop

urbd 5734 Hendrik Tieben

As in every year, the programme plans an international urban design workshop. If the pandemic situation allows, the workshop will be organised in an overseas location (such as Venice) in collaboration with one of our international partner programmes. If the current travel restrictions remain in effect, an international online workshop with our international partners will be arranged.

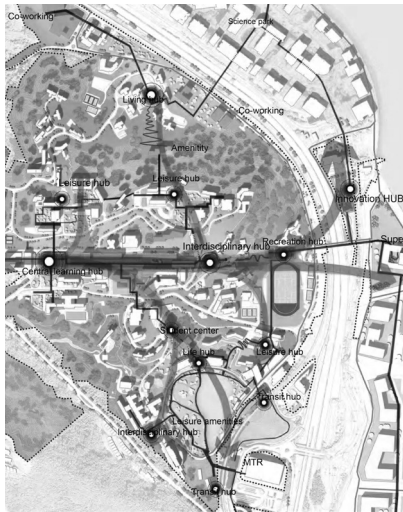
DESIGN STUDIO

Urban Design Studio II a & b

urbd 5720

Jeroen van Ameijde

Hana Huang



The 'New' New Town, Part II

'Future Urbanism' – Creating sustainable, liveable and supportive communities

The second stage of the studio process will focus on the Kau Yi Chau Artificial Islands, in collaboration with Hong Kong's Planning Department and its strategic partners. The beginning of this stage will consist of a combination of literature research and digital modelling exercises, focusing on the creation of multi-layered urban simulation models that evaluate mobility networks, environmental performance, density and liveability. With the studio as a whole, we will develop a library of urban organisational structures which reference the urban morphology, function mixing, activity and behavioural patterns found in Hong Kong. The aim of this stage is to develop critical studies into the constraints and opportunities of urban planning frameworks, shaping vibrant and liveable urban environments that facilitate supportive social processes.

The final phase of the studio will focus on the development of a series of visionary scenarios and pilot schemes for the Kau Yi Chau Artificial Islands, proposing strategic arrangements of public, private and mixed-use urban areas and exploring the interplay between urban facilities, networks, public spaces and Quality of Life. As a studio, we aim to critically reflect on the inability of urban planning to shape or predict the detailed qualities of vibrant urban community life, and seek to adapt a time-based and human centric design approach that incorporates the notions of contingency, adaptation and participation. We aim to discuss how investment in new infrastructure, shared facilities and urban spaces can be instrumentalised to create more vibrant, equitable and resilient communities, capable to evolve with future societal and environmental changes.

ELECTIVE COURSES

Urban Processes

urbd 5731 Sujata Govada

This course offers an introduction to urban processes such as urban regeneration, statutory planning, placemaking, and the role of community engagement in the development of Hong Kong and beyond. Through lectures, assignments, role-play and community workshops, students get hands on experience by directly engaging with various stakeholders as well as community members.

Urban Transport Networks

urbd 5732 Daniel Pätzold

The course provides an introduction into history and application of urban transportation systems. Urban integration, policy, transport concepts, planning aspects, technical requirements and ways of implementation are presented. During the course visiting lectures, professional knowledge will be conveyed whilst its adaption to student design projects will be encouraged.

THESIS

Urban Design Thesis

urbd 6701 Jeroen van Ameijde / Sylvia Chan

This course covers the general procedures of theoretical inquiry related to urban design. For the dissertation, students will develop a proposal and produce an intellectually rigorous piece in research and writing. The topics will be self-defined but should relate to the overall studio theme.

MPhil-PhD

name	research title	supervisor(s)
<i>Chan Ching Kan / PhD (Part-time)</i>	Architect as the Agency in the Making of Public Realm: Cultivating Diversity through Commercial Architecture	<i>Francesco Rossini Stanislaus Fung</i>
<i>Chen Jun / PhD</i>	Dialogue: A Case Study of the Collaborations Between Structural Engineer Zhang Zhun and Several Chinese Architects	<i>Thomas Chung Patrick Hwang</i>
<i>Rico Samuel Diederling / PhD</i>	Architecture in Accuracy: Crossroads between Allowance and Exactitude in the Detail Design of Rural Construction in China	<i>Zhu Jingxiang</i>
<i>Fung Sze Wai, Veera / PhD</i>	Developing without Bias: An Alternative for a Gender Inclusive Design for Production in Gaobu Village, Tongdao County, Hunan	<i>Peter W. Ferretto</i>
<i>Gao Shichao / PhD</i>	Masonry Experimentation with Special-Shaped Brick Inspiration from Luigi Caccia Dominioni's Built Cases	<i>Zhu Jingxiang</i>
<i>Geng Yan / PhD</i>	From Rural Settlement to Urban Form: A Comparative Study of Village Transformations in Shenzhen and Hong Kong	<i>Hendrik Tieben</i>
<i>Garvin Goepel / PhD</i>	Augmented Architecture: On Practical Challenges and the Implementation of Augmented Reality (Ar) 3d-holographic Instruction on Assembly and Fabrication in an Architectural Context for the 'Best Practice Guide' of Ar – Manuals	<i>Zhu Jingxiang Kristof Crolla</i>
<i>Ho Tsz Wai / PhD</i>	Redesigning and Evaluating Primary School Spaces for Wellbeing in Hong Kong: A Systematic Approach	<i>Thomas Chung</i>
<i>Jiang Pu / PhD</i>	The Impact of Skyway Walking System on Walking Experience: A Case Study of Hong Kong	<i>Francesco Rossini</i>
<i>Jin Yuan / PhD</i>	Research on Protection Strategies of Historic Underground Reservoir	<i>Thomas Chung</i>
<i>Ju Lipin / PhD</i>	History, Regional Identity, and Collective Memory of a Chinese Experimental Community: Research on the Conservation of Shekou Industrial Zone, Shenzhen, China	<i>Hendrik Tieben</i>
<i>Lam Man Yan / PhD</i>	Thinking through Architectural Prototype: From Small Architecture to Big Social Impact	<i>Peter W. Ferretto</i>
<i>Lau Hing Ching / PhD</i>	Regulating Uncertainties: Information Management in Modern Methods of Construction	<i>Zhu Jingxiang</i>
<i>Li Junwei / PhD</i>	Power and Hygiene: Modernity in the Urban Form of Hong Kong	<i>Hendrik Tieben Mo Kar Him</i>

name	research title	supervisor(s)
<i>Li Xiang / PhD</i>	Evaluating the Accessibility of Public Open Space under Demographic Aging with Geographical Information System: A Case Study of Wong Tai Sin District, Hong Kong	<i>Hendrik Tieben Tsou Jin-yeu</i>
<i>Li Yuke / PhD</i>	Soundscape in Chinese Literati Gardens of the Ming Dynasty	<i>Hendrik Tieben Thomas Chung</i>
<i>Liang Erchun / PhD</i>	The Mechanism of Driving Force for the Evolution of Collective Housing Typology in Shenzhen (1979-2019)	<i>Hendrik Tieben</i>
<i>Liu Chang / PhD</i>	Rocks and Rockeries in Song Dynasty China	<i>Hiroyuki Shinohara Stanislaus Fung</i>
<i>Liu Xinyu / PhD</i>	Street Vitality Analysis Based on Multi-Source Data Fusion Analysis	<i>Hendrik Tieben Jeroen van Ameijde</i>
<i>Liu Yan / PhD</i>	History and Memory: Research of the Gardens on Paper in the Late Ming Dynasty	<i>Hiroyuki Shinohara Stanislaus Fung</i>
<i>Liu Ziwei / PhD</i>	Learning from Progress: Revealing Traditional Timber Craftsmanship through Collaborative Construction	<i>Peter W. Ferretto</i>
<i>Luo Jing / PhD</i>	Form Follows Body: The Dong Carpenter's Knowledge and the Application of Carpenter's Rules, Rituals and Tools for Constructing the Dong Minority Houses in Rural Southern China	<i>Peter W. Ferretto</i>
<i>Nan Tian / PhD</i>	A Heritable Adaptation: What Can We Learn From Torii and How to Use the Learning?	<i>Zhu Jingxiang</i>
<i>Ng Tsing Yin, Provides / PhD</i>	Collaborative Intelligence: Digital and 3d Technology Application in Participatory Design for High Density Housing Estates	<i>Hendrik Tieben Jeroen van Ameijde</i>
<i>Shen Qi / PhD</i>	Structure, Movement, and Experience in the Works of Atelier Li Xinggong	<i>Thomas Chung Stanislaus Fung</i>
<i>Wajih Tariq / PhD</i>	Enhancing Quality of Life in Hong Kong: A Computational Approach for the Evaluation and Redistribution of Urban Resources	<i>Hendrik Tieben Jeroen van Ameijde</i>
<i>Tian Fang / PhD</i>	Study on Construction Strategies Towards Sdgs in Rural Yunnan	<i>Edward Ng</i>
<i>Wang Jingying / PhD</i>	Post-disaster Housing Recovery with Traditional Earthquake Resistant Techniques	<i>Edward Ng</i>
<i>Wang Luming / PhD</i>	Research on Digital Fabricated Small Scale Light Weight Wood Components Assembly Building System	<i>Zhu Jingxiang</i>

name	research title	supervisor(s)
Wen Rui / PhD	Community Design Adaptability of Productive Aging in China from the Perspective of Social Capital Concept: Case Studies in Taiyuan and Chengdu	Thomas Chung
Wu Fangning / PhD	Evaluation of New Towns and New Development Areas' Spatial Planning in Hong Kong from the Perspective of 20-Minute Neighborhood	Hendrik Tieben
Xiang Luyao / PhD	Outdoor Environment as a Means to Relieve Human Psychological Stress in High Density City at Pedestrian Level	Edward Ng
Yang Qi / PhD	The Rise of Social Media Popular City: Visual Spectacle Consumption and Cultural Space Production of Shibati in the Old City of Chongqing	Hendrik Tieben Inge Goudsmit
Yiu Hoi Lam, Melody / PhD (Part-time)	Institutional Public Space: Cultural Architecture, Institution and its Public Space	Francesco Rossini
Yu Boyuan / PhD	TBC	Zhu Jingxiang Adam Fingrut
Zhang Xiaojun / PhD	Resilient Village as the Rural Response to the Megacity of the Greater Bay Area in China	Peter W. Ferretto
Zhao Mingming / PhD	Reimaging Collaborative Work with VR: A Comparative Study of the Impact on Occupants Perceived Satisfaction and Performance between Physical Built Environments and Immersive Virtual Environments	Edward Ng Tatjana Crossley

Incoming PhD Students 2022-23

Cheng Sifan MSc CUHK BEng BJFU	Supervisors: Hendrik Tieben Jeroen van Ameijde	Lee Yilin MArch UNSW BArch UNSW	Supervisor: Edward Ng	Xu Xin MEng Guangzhou U. MSc GSA, BArch Guangzhou U.	Supervisor: Peter W. Ferretto
Dai Shan MSc CUHK BAg CAU	Supervisors: Edward Ng Maggie Ma	Lei Danyang MSc CUHK BEng SCAU	Supervisors: Francesco Rossini Mo Kar Him	Yano Yutaka GDipArch UCL BArch UCL	Supervisor: Thomas Chung
Fu Zhiying MEng TJU BArch BUCEA	Supervisors: Zhu Jingxiang Maggie Ma	Li Yangzhi MArch UCL BArch Griffith U.	Supervisors: Zhu Jingxiang Adam Fingrut	Ye Xinran MArch Columbia U. BArch Tianjin Chengjian U.	Supervisor: Francesco Rossini
Gong Yidan MUD CMU BEng Tianjin U.	Supervisors: Thomas Chung Mo Kar Him	Lin Shuiyang MSc CUHK BEng XMU TTK College	Supervisors: Thomas Chung Jeroen van Ameijde	Zhang Yiwei MA NUS BEng Chang'an U.	Supervisor: Hendrik Tieben

School of Architecture
The Chinese University of Hong Kong

HKT Via ZOOM
10 AM-12 AM

29 April 2022

PhD Symposium

Research Perspective in
Architecture and Urban Design

Session 1A : Design Research



LAM, Man Yan Milly



LAU, Hing Ching



LIU, Ziwei Paula



SUN, Xiong



WANG, Jingying

Session 1B : Urban Study



JIANG, Pu



JU, Liqin



LIANG, Erchun



TIAN, Fang



WEN, Rui

Session 2A : History and Theory



GAO, Shichao



JIN, Yuan



LI, Junwei



NAN, Tian



YANG, Qi

Session 2B : Computer-Aided Research



GOEPEL, Garvin



LIU, Xinyu



NG, Tsing Yin Provides



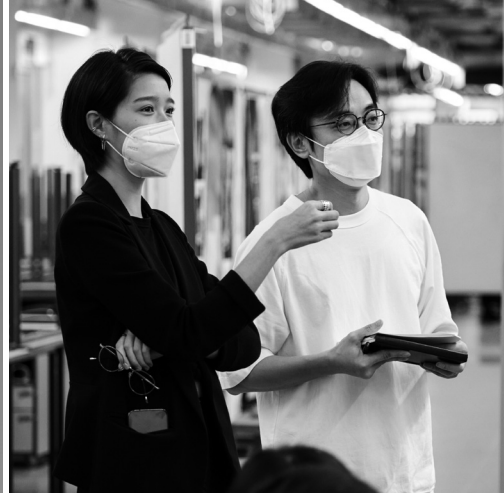
WANG, Luming



YU, Boyuan



ZHAO, Mingming



Faculty

Full-time Faculty

Kelly Chow	<i>Professional Consultant</i>
Thomas Chung	<i>Associate Professor</i>
Tatjana Crossley	<i>Assistant Professor</i>
Peter W. Ferretto	<i>Associate Director and Associate Professor</i>
Adam Fingrut	<i>Assistant Professor</i>
Inge Goudsmit	<i>Assistant Professor</i>
Han Man	<i>Lecturer</i>
Maggie Ma Kingsley	<i>Assistant Professor</i>
Mo Kar Him	<i>Assistant Professor</i>
Edward Ng	<i>Yao Ling Sun Professor of Architecture</i>
Francesco Rossini	<i>Associate Professor</i>
Hiroyuki Shinohara	<i>Assistant Professor</i>
Hendrik Tieben	<i>Director and Professor</i>
Jeroen van Ameijde	<i>Assistant Professor</i>
Xu Liang	<i>Lecturer</i>
Melody Yiu	<i>Lecturer</i>
Zhu Jingxiang	<i>Associate Professor</i>

Emeritus and Honorary Professors

Nelson Chen	<i>Honorary Professor</i>
Gu Daqing	<i>Emeritus Professor</i>
Heng Chye Kiang	<i>Honorary Professor</i>
Ho Puay Peng	<i>Emeritus Professor</i>
Ronald Lu	<i>Honorary Professor</i>
Peter Rowe	<i>Honorary Professor</i>
Tsou Jin Yeu	<i>Emeritus Professor</i>
Rocco Yim	<i>Honorary Professor</i>

Part-time Faculty

Brian Anderson	<i>Adjunct Associate Professor</i>
Nobuo Aoki	<i>Adjunct Professor</i>
Essy Baniassad	<i>Adjunct Professor</i>
Chan Chi Yan	<i>Adjunct Associate Professor</i>
Sylvia Chan	<i>Lecturer (PT)</i>
Jessica Cheung	<i>Lecturer (PT)</i>
Fergus Comer	<i>Adjunct Associate Professor</i>
Raffaella Endrizzi	<i>Lecturer (PT)</i>
Pedram Ghelichi	<i>Lecturer (PT)</i>
Claude Godefroy	<i>Adjunct Associate Professor</i>
Sujata Govada	<i>Adjunct Associate Professor</i>
Eric Ho	<i>Lecturer (PT)</i>
Simon Hsu	<i>Adjunct Associate Professor</i>
Hana Huang	<i>Lecturer (PT)</i>
Rina Ko	<i>Lecturer (PT)</i>
Holger Kehne	<i>Adjunct Associate Professor</i>
Lam Tat	<i>Adjunct Associate Professor</i>
Sarah Lee	<i>Adjunct Associate Professor</i>
CY Lau	<i>Lecturer (PT)</i>
Sebastian Law	<i>Adjunct Professor</i>
Juan Minguez	<i>Adjunct Associate Professor</i>
Betty Ng	<i>Adjunct Associate Professor</i>
Daniel Pätzold	<i>Adjunct Associate Professor</i>
Ioana Alexandra Pricop	<i>Lecturer (PT)</i>
Ricky Suen	<i>Lecturer (PT)</i>
Wataru Shinji	<i>Professional Consultant (PT)</i>
Nelson Tam	<i>Adjunct Associate Professor</i>
Elva Tang	<i>Adjunct Associate Professor</i>
Kenneth Tse	<i>Adjunct Associate Professor</i>
Paul Tse	<i>Adjunct Associate Professor</i>
Hubert Un	<i>Lecturer (PT)</i>
Wang Zhenfei	<i>Adjunct Associate Professor</i>
Xu Subin	<i>Adjunct Professor</i>
Manfred Yuen	<i>Lecturer (PT)</i>
Lily Zhang	<i>Adjunct Assistant Professor</i>



zhu jingxiang



chan chi yan



lam tat



holger kehne



kelly chow



maggie ma



hendrik tieben



lily zhang



adam fingrut



paul tse



sebastian law



francesco rossini



inge goudsmit



hiroyuki shinohara



betty ng



mo kar him



peter w. ferretto



fergus comer



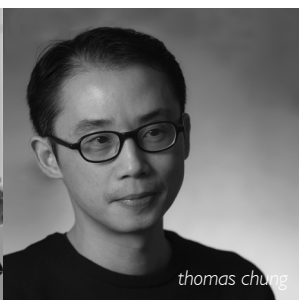
tatjana crossley



han man



edward ng



thomas chung



melody yiu



xu liang



jeroen van ameijde

Events 2021-22

54

event	date	event	date
Kinoshita Lecture		Ida Sze, Billy Chan & Vitus Man Creativity + Technicality	20.01.2022
Wong Mun Summ Form Follows Systems	13.04.2022	Ivy Lee & Ben Yeung Diversity + Speciality	17.02.2022
Public Lecture Series		Rina Ko & Lam Tat Dream + Reality	16.03.2022
Ken Fung & Kevin Mak Vanishing Perspective: Hong Kong's Signboard Streetscape	17.09.2021	May Ho & Tina Yeun Conservation + Development	07.04.2022
Selva Gürdoğan & Gregers Tang Thomsen The Civic Entrepreneur	08.10.2021	Seminars	
David Gersten Architectonics of Curiosity	15.10.2021	How Do We Sense Space	16.09.2021
Aura Luz Melis Unforeseen Architecture	05.11.2021	Visible Transformation	24.09.2021
Miho Mazereeuw In the Perspective of Building Resilience	19.11.2021	The Beast and the Beauty	28.09.2021
Pierfrancesco Celada Hong Kong Public Space: A Photographic Perspective	14.01.2022	Parkview Green Fangcaodi in Beijing	29.11.2021
Jovana Zhang Frog Perspective	28.01.2022	Building Technology and Culture in the Asia-Pacific Region: Histories and Projects	31.03 - 25.06.2022
Simon Henley Sensible Architecture	11.02.2022	PhD Symposium 2022	28.04 - 29.04.2022
Xu Tiantain Dialogue with Nature	25.02.2022	Regenerating Hong Kong's Countryside Forum	11.06.2022
Jonathan Robinson From Impossible to Extraordinary	11.03.2022	Islands and Ideas Forum	18.06.2022
Conversations with Alumni Series		Exhibitions	
Vivien Mak & Terence Wong Community + Commerciality	21.10.2021	'Sand' Exhibition	24.02 - 24.04.2022
Lucia Cheung & William Shum Making + Capturing	11.11.2021	'Mobile City Lab 2022: Co-Creating Livable and Healthy Places' Exhibition	04.06 - 18.06.2022
		2022 Master of Architecture Graduation Show	10.06 - 15.06.2022



Summer Activities 2022

How to find the Meta-forms

Han Man

16 May - 27 May

This course ideates the concept of meta-form within architecture and illustrates its significance in architectural design. It enables students to explore various meta-forms and develop a meta-form into an architecture prototype. The lecture series will formulate the concept of meta-form by coalescing the related architectural concepts in association with architectural works and will present ample evidence to exemplify the increasing significance of the concept in contemporary architecture.

Conceived, Perceived, Lived Mapping Urban Politics

Inge Goudsmit

23 May - 30 June

The summer course will explore and represent urban space from different perspectives: the conceived, the perceived and the lived, and map the different stakeholders involved in the shaping of space. The course aims to unravel these elements to gain a better understanding of how urban politics produce space, how it is appropriated by users and how it is symbolically interpreted. We will explore these topics by doing: to go into the field and experience how the city looks, feels and what it means to people, and compare this to how it is designed.

Rome Programme 2022

David Dornie

13 June - 19 June

The course aims to introduce students to the city, history and culture of Rome - its urban form, historical and modern architecture. It aims to focus on close observation and drawing, and the curation of a sketchbook. The trip will comprise of guided city walks

in Rome. Students draw during presentations about the history and significance of buildings, gardens and public spaces. The walks are designed as an introduction to the Western architecture from Ancient Rome to the Fascist reshaping of the city. It will culminate in contemporary buildings by Piano and Hadid. There will be one trip outside of Rome, to Tivoli, to study Hadrian's Villa and the Villa d'Este.

The Building Envelope Wall of Light

Kelly Chow

4 July - 15 July

This course explores the building envelope as a designed element that can be considered in terms of specific imperatives: technique; light; tectonics; and the city. By way of case studies and physical modelling, we cut a section through buildings and investigate the element which frequently becomes the object of heated controversy over questions of performance and style.

Spatial Narrative

Christopher Gee

31 May - 23 June

In the professional realm of architecture, urban design and urban planning, concepts and ideas mainly reside in the three-dimensional experience, while designers heavily rely on two-dimensional narrative to convey their proposals. This course steps into the fourth dimension - time - to create a more experiential storytelling of spatial design by incorporating video and motion graphics, opening up the possibilities of presenting concepts understood through time. Through a series of technical workshops and assignments, students will learn a wide variety of digital workflows that string together a series of complementary digital tools to build visual narratives.

Digital Drawing

Michael Cheung / Norine Chu / 24 June - 9 July

Marco Chui / Anthony Ko /

Jane Ling

This workshop focuses on translating architectural design ideas - structures, spaces, activities and time into 2D representational drawings. By exploring different ways of 'drawing', the course helps to transform students' existing projects and 3D models into high-quality presentation graphics, manifesting the 3-dimensionality and depth in the information and underlying ideas contained in the designs. With a central focus on 'buildings', the workshop aims to highlight additional layers of information which can be incorporated in final drawings to represent spatial qualities, activities and processes that are taking place in and around them. Various ways of setting up architectural drawings will be discussed, including animated plans and sections (using traditional or perspectival framing), aerial views in context, and exploded axonometric views.

Design / Build Experience Free Lab

Kelly Chow

18 July - 30 July

The workshop seeks to give participants an introductory experience in designing and constructing a built artifact, working with a combination of digital and analog tools. Three options of installation, including a small wooden pavilion, a deployable structure or a laminated wood installation, are available. For each installation, construction or parametric fundamentals will be taught, followed by design charette and the assembling process. Students will explore the life cycle of design and making, including exhibition, dismantling, donation, recycling and upcycling.



Multi-Axis Robotics Workshop

Adam Fingrut

9 August - 11 August

This workshop will expose participants to the cross section between design tools and collaborative robotic arms. This hands-on experience will show students how to approach multi-axis robotics to conduct automated tasks linked to software like Rhinoeros 3D, Grasshopper, and Python. Students will use computer programming and consider how to transition ideas from digital models into physical and material actions - such as drawing, camera movements, and customised process.

Mobile City Lab 2022: Co-Creating Livable and Healthy Places

Hendrik Tieben

4 June - 18 June

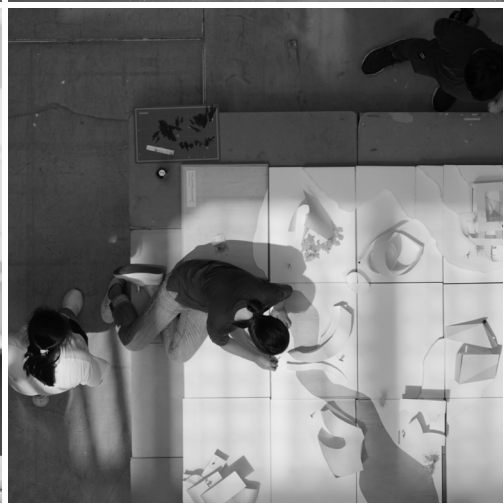
Over the past ten years, our students, teachers, professionals and local communities have engaged in discussions, research, teaching and learning on multifaceted urban issues collectively. During this process, place-based knowledge is cultivated, deepening multifarious understanding and our city is turned into a co-learning and knowledge co-creation space – as a Mobile City Laboratory. This programme is a collaborative transdisciplinary effort to showcase the works and reflections of aforementioned stakeholders. It consists of a two-week exhibition at the atrium of the Central Market, and two forums titled 'Regenerating Hong Kong's Countryside' and 'Islands and Ideas'. The first forum includes two sessions discussing the present countryside regeneration in Hong Kong and cultural heritage conservation of the South Lantau Island, while the second forum focuses on the development for islands of Hong Kong and abroad.

Architecture Explorer Programme

Hiroyuki Shinohara

18 July- 30 July

This summer programme aims to enable secondary school students from Hong Kong and abroad to understand first-hand the joys and challenges of studying architecture. It provides an opportunity for enrolled learners to unleash their creative potential through art, design and architecture. Students will learn to see the significance of architecture through lectures, and explore the fun of design making by transforming a concept into three-dimensional spaces, using both hand tools and computing software. Students will also experience architecture through guided field trips to significant buildings and professional architectural offices. Students will also be tutored to develop their individual design projects. The combination of studio, workshops, lectures and field trips presents a unique introduction to different aspects of architecture and how it is practiced today.



30th Anniversary Celebrations

The School of Architecture celebrated its 30th Anniversary over the past academic year 2021-22.

The Homecoming Day on 4 September 2021 commenced in the afternoon with our alumni, faculty and students enjoying a relaxing day of gatherings, sharing and live performance. Those present included some of our School's former and present directors (Prof. Essy Baniassad, Prof. Ho Puay-peng, Prof. Hendrik Tieben), the design architects of our School building (Prof. Yuet Tsang Chi and Prof. Wallace Chang), our faculty members, students and alumni. This special occasion also marked the kick-off of the Mentorship Program 2021-22, as our graduating students and mentors met face to face for the first time. All mentors are our practicing alumni with diverse backgrounds and work focuses, who would walk our students through their preliminary stages of profession.

Celebration highlights continued with a Kinoshita Lecture in Architecture on 13 April 2022 by award-winning Singapore-based architect Wong Mun Summ of WOHA, who gave exceptional insight into his practice's systems approach, demonstrating how every project was integrated into its social, ecological and urban context. A series of alumni sharings were organised from October 2021 to April 2022, with 13 alumni of various architecturally-related fields sharing their passions and visions not only on their professions but also their personal outlooks on life.

Past and oning events and projects

Placemaking	Fall 2021 - Spring 2022
Homecoming	4 September 2021
Conversations with Alumni - Monologue, Dialogue, Multilogue	Fall 2021 - Spring 2022
Mentorship Programme	Fall 2021 - Fall 2022
30th Anniversary Publication	Fall 2022
Alumni Exhibition	Spring 2023



Student Exchange 2022-23

Exchange Programme	Outgoing	Incoming
<i>Partner University</i> Delft University of Technology	TBC	
Graz University of Technology	TBC	Vanessa Ly
National University of Singapore	TBC	John Chew Geronimo Jr
Polytechnic University of Milan	TBC	TBC
Polytechnic University of Turin	TBC	TBC
University of Applied Sciences Stuttgart	TBC	Fabian Bernad Timo Markus Eichenbrenner Falk Aritomo Hettwer
University of Cambridge	TBC	TBC
University of Westminster	TBC	TBC

Incoming and outgoing students to be confirmed in Term 1.

Awards and Scholarships 2021-22

Awards	Recipients	Year
AIA Hong Kong Scholastic Awards 2022	Lincoln Chan	BSSc Y4
Clifford Chun Fai Wong Prize in Housing Design	Yau Yi Kin, Ekin	MArch 2
General Education Best Essay Award 2020-21 Bronze Award	Hui Chai Yeung, Zach	BSSc Y2
64 Hong Kong PhD Fellowship Scheme	Garvin Goepel	PhD
RIBA President's Medal Award Nominees Silver Medal	Chan Che Ting Cheung Ho Ching, Minia Jonathan Ng Ying Tung, Ruby	MArch 2 MArch 2 BSSc Y4 BSSc Y4
Bronze Medal		
School Leadership and Service Award	Cheung Yi, Yvonne Yau Yi Kin, Ekin	BSSc Y4 MArch 2
Society of Construction Law HK Prize	Leung King Chi, Matthew Ngan Tsz Yui, Angie	MArch 2 MArch 2
School of Architecture Best Studio Design Awards Explore I Outstanding Use of Drawings	Lam Lam Wing, Eric Lee Man Chun, Cher Shen Yumeng, Sherry Lam Ching Ho, William Chan Lik Hang, Alex Lit Ching, Oliver Wong Yu Hung, Brant	BSSc Y2 BSSc Y2 BSSc Y2 BSSc Y2 BSSc Y2 BSSc Y2 BSSc Y2
Outstanding Use of Materials Outstanding Use of Models		
Outstanding Use of Photography		
Explore II - Outstanding	Cheung Hiu Wan Chiu Ching Yin Ho Pik Yui	BSSc Y2 BSSc Y2 BSSc Y2
Studio A Studio A - Honourable Mentions	Zhang Xinyue, Jess Lau Ho Fung, Tony Law Tsz Wai, Harry	BSSc Y3 BSSc Y3 BSSc Y3
Studio B Studio B - Honourable Mentions	Lau Ho Fung, Tony Li Cheuk Wah, Anson Szeto Tsz Yui Yam Hoi Fai, Johnson	BSSc Y3 BSSc Y3 BSSc Y3 BSSc Y3

Awards

Studio C

Recipients

Chen Wei Lien
Cheung Yi, Yvonne
Jonathan
Liang Qiongdan
Mak Miu Yin
Ng Ying Tung, Ruby
Tse Yuen Wing
Wong Shun Hang
Yeung Ching Sui

Year

BSSc Y4
BSSc Y4
BSSc Y4
BSSc Y4
BSSc Y4
BSSc Y4
BSSc Y4
BSSc Y4
BSSc Y4

Studio D

Lincoln Chan
Lau Yuk Fan, Fenton
Ng Ying Tung, Ruby
Chen Mo, Zoe
Li Yuen Ching, Rani

BSSc Y4
BSSc Y4
BSSc Y4
BSSc Y4
BSSc Y4

Studio D - Honourable Mentions

Advanced Architectural Design Studio

Gold Prize

Silver Prize

Bronze Prize

Au Hok Yin
Chan Pik Kwan, Jenny
Cheung Hiu Yan, Christine
Charmaine Lin

MArch 1
MArch 1
MArch 2
MArch 2

'The Living Museum' Competition

Golden Mention

Lam Man Yan, Milly
Liu Ziwei, Paula

PhD
PhD

UIA-HYP CUP 2021 International Student Competition
in Architectural Design - Honorable Mentions

Auyeung Sun Hei
Cheng Hoi Yau
Chu Cheuk Yan
Choi Man Wing

MArch 1
MArch 2
MArch 2
MArch 1

World CAAD PhD Workshop - Best Presentation Award

Garvin Goepel

PhD

Scholarships

Formica Scholarship

Chan Tung Hoi, Peter

BSSc Y4

Professor Raymond Fung Scholarship

Cheung Kwan Ho

MArch 1

Wong Tung & Partners Scholarship

Ng Pak Hei, Ronald
So Wing Yi, Zoe

MArch 2
MArch 2

Wharf Architectural Design Internship

Cheung Hoi Lan, Sandy
Leung Man Chong, Larissa

MArch (2021)
MArch (2021)

Awards (Alumni)

2021 A&D 40 Under 40 Award

DFA Hong Kong Young Design Talent Award 2021

HKIA Student Medal 2021

HKIA Young Architect Award 2021

'Minimal Shelter Space – Proposal for Providing Individual Shelters for Evacuation Centers in Japan' Honourable Mention

Quality City China Plan International Young Designers Competition Honourable Mention

Young Architects Competitions
Second Prize
Third Prize**Awards (Faculty)**

CUHK Faculty of Social Science Exemplary Teaching Award 2021

HKIA Merit Award outside Hong Kong – Institutional Building & Special Architectural Award Humanity & Social Inclusion

International Exhibition of Inventions of Geneva Silver Medal

The Green Building Award 2021 - Special Citation on UN Sustainable Development Goals (New Buildings Category: Completed Projects – Institutional)

World Architecture Festival 2022 (Completed Buildings: School) - Finalist

World Festival of Interiors 2022 (Education) - Finalist

Recipients

Alvin Kung

Ciara Lo

Chung Ho Yin, Otto

Lam Wai Hon, Joshua

Leung Wai Hong, Raygo
Yu Man Hon, David
Chan Ho Nam, Carson

Solomon Cheung

Solomon Cheung
Lai Ho Yim, Julio
Solomon Cheung**Year**

MArch (2010), BSSc (2006)

BSSc (2017)

MArch (2021)

MArch (2018)

BSSc (2020)
BSSc (2020)
BSSc Y4

MArch (2019)

MArch (2019)
MArch 2
MArch (2019)**Recipients**

Adam Fingrut

One University One Village (1U1V) Team (led by Edward Ng)

Adam Fingrut
Darwin Lau (CUHK Mechanical Automation Engineering)
Yeung Yam (CUHK Mechanical Automation Engineering)

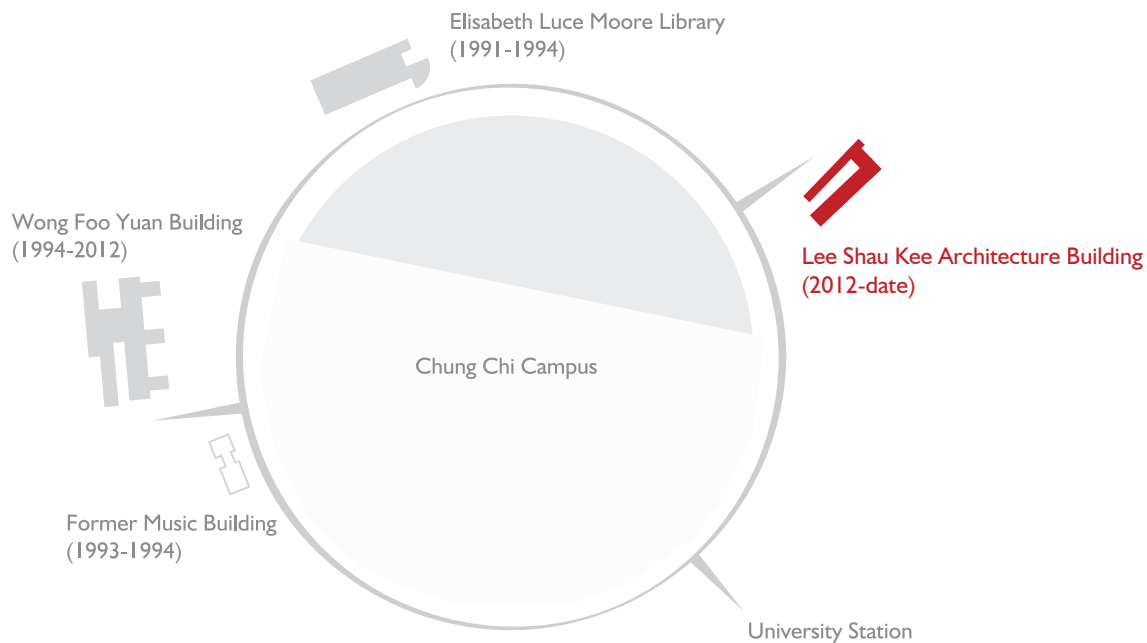
One University One Village (1U1V) Team (led by Edward Ng)

Condition_Lab (led by Peter W. Ferretto)

Condition_Lab (led by Peter W. Ferretto)



Location

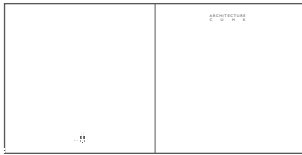


SCHOOL OF ARCHITECTURE

香港新界沙田中文大學建築學院
LEE SHAU KEE ARCHITECTURE BUILDING
THE CHINESE UNIVERSITY OF HONG KONG
SHATIN, NT, HONG KONG. TEL +852 3943 6583
EMAIL ARCHITECTURE@CUHK.EDU.HK

editor
assistant editors
text / images
photographer

xu liang
tammy kong, rachel lai
students and staff
samson huang



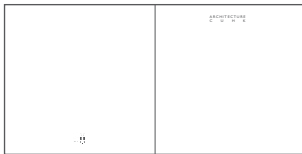
notebook iv 2004-05 198 x 198mm 68 pages
vito bertin | essy baniassad



notebook iii 2003-04 198 x 198mm 64 pages
vito bertin | essy baniassad



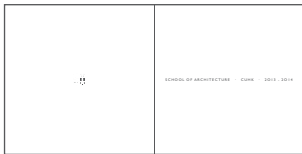
notebook ii 2002-03 198 x 198mm 52 pages
vito bertin | essy baniassad



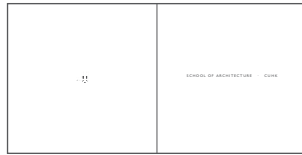
notebook i 2001-02 210 x 210mm 36 pages
vito bertin | essy baniassad



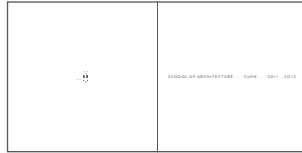
blackbook 2014-15 198 x 198mm 64 pages
bruce lonnman | andrew yu



blackbook 2013-14 198 x 198mm 64 pages
bruce lonnman | andrew yu



blackbook 2012-13 198 x 198mm 64 pages
thomas chung | andrew yu



blackbook 2011-12 198 x 198mm 52 pages
thomas chung | andrew yu



blackbook 2010-11 198 x 198mm 48 pages
thomas chung | zachary wong



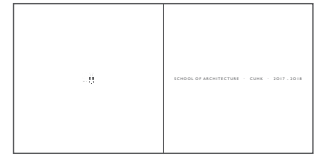
blackbook 2009-10 198 x 198mm 44 pages
thomas chung | andrew yu



blackbook 2015-16 198 x 198mm 68 pages
bruce lonnman | andrew yu & xu liang



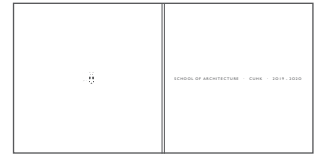
blackbook 2016-17 198 x 198mm 68 pages
bruce lonnman | xu liang



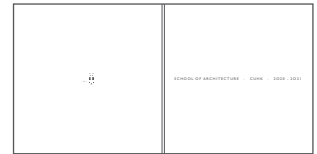
blackbook 2017-18 198 x 198mm 72 pages
bruce lonnman | xu liang



blackbook 2018-19 198 x 198mm 68 pages
bruce lonnman | xu liang, janice leung



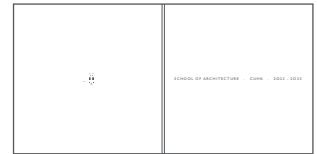
blackbook 2019-20 198 x 198mm 68 pages
bruce lonnman | xu liang, janice leung



blackbook 2020-21 198 x 198mm 60 pages
xu liang | tammy kong



blackbook 2021-22 198 x 198mm 68 pages
xu liang | tammy kong, bianca lam



blackbook 2022-23 198 x 198mm 68 pages
xu liang | tammy kong, rachel lai

